

OASIQ

INSPIRED BY NATURE. CRAFTED FOR PEOPLE.



WWW.OASIQ.COM

INDEX

8	CORAIL
22	COCO
36	MUZE
42	SKAGEN
62	DIUNA
78	SANDUR
108	RIAD
120	MARO
130	YLAND
140	REEF
146	MACHAR
162	SERAC
170	CERU
178	ATTOL
188	CUSHIONS

INSPIRED BY NATURE

CRAFTED FOR PEOPLE

Lush greens and sparkling blues. The enticing sounds of trickling water and of leaves rustling in the gentle breeze. For centuries weary travellers, adventurers and other visitors have appreciated the wonders of the oasis. A safe haven on the long sandy trek through a desert. A place for rest and recreation before the journey is continued.

Imagine green rooftop gardens in hectic cities. Spacious terraces looking on to wide-open countryside. Swimming pools shimmering in the moonlight. A ski resort banked by spectacular mountain scenery. OASIQ aspires to create an oasis of calm where it is desired. To reflect beautiful natural surroundings where they are present. Our passion is to design outdoor furniture for people who share our dream.

Our style is distinctive yet versatile. Timeless with a modern touch. OASIQ outdoor furniture bridges the divide between indoors and

outdoors effortlessly. Dining, playing, relaxing, resting, entertaining guests – every activity is catered for. Ultimately however, our collections serve a purpose beyond functionality. We endeavour to enrich people's experience of outdoor living. To connect them with the beauty found in nature's elegant creations. For we believe that an appealing outdoor setting, crafted with attention to detail, contributes to people's feeling of well-being.

Our source of inspiration

Connecting people to the beauty of their surroundings is a process that begins with a keen eye for organic patterns. For shapes that are pleasant to behold. The simple elegance of nature's own creations is always the source of our inspiration. Luckily for us, nature's secret was unlocked centuries ago. The beauty of the patterns found in a pine cone and in the perfection of an uncurling fern is expressed by the golden ratio. This is always the bedrock of our approach.

THE BEAUTY OF THE SPIRAL PATTERN CREATED BY A SUNFLOWER'S CENTRAL CLUSTER OF FLORETS IS EXPRESSED BY THE GOLDEN RATIO. THIS IS THE BEDROCK OF OUR APPROACH.

**“AT OASIQ, WE EXPRESS
OUR PASSION ABOUT
PEOPLE ENJOYING
OUTDOOR LIFE BY
CREATING BEAUTIFUL
AND UNIQUE OUTDOOR
FURNITURE.”**

Blast from the past

The new OASIQ collections are a contemporary take on some of the trends of the fabulous fifties that have stood the test of time. The 1950s were a time of innovation in design. The use of new materials inspired clean lines and comfortable curves with an emphasis on leisure from the USA, and graceful soft-edged teak designs from Scandinavia. Lively pastel colour schemes in pink, turquoise, mint green, pale yellow and blue were the rage. In fashion it was the heyday of Dior's 'New Look' and, thanks to television, exuberant music and dance styles, such as Rock and Roll, the Bunny Hop and the Hand Jive, exploded onto the scene.

Creating originals

Creativity thrives on linking up ideas, combining them into something new, making connections that express originality. Our creations are inspired by links to vintage designs that have endured for decades by winning people's hearts. They are crafted by skilled people who feel

passionately about what they create, and whose craft-culture handiwork provides a unique touch. The outstanding quality of each piece is ensured by modern design insights and the use of high-tech materials. And when it comes to originality, we love to work with designers who share our ambition to exceed people's expectations and open the door to imagination.

Q for quality

Quality is in our DNA. Our company's roots can be traced back to a long tradition of craftsmanship in fine leather, sturdy metal parts and weatherproof textiles for equestrian sports. This makes us especially qualified to meet the high demands made on outdoor furniture. The materials we use are guaranteed to endure the elements, as well as to meet the high standards of comfort and flexibility modern life sets.

- > UNIQUE COMFORT**
- > WATER-RESISTANT**
- > UV-RESISTANT**
- > WEATHERPROOF**
- > LOW MAINTENANCE**

CORAIL

Stir it up

CORAIL's array of colours provides the palette to experiment to your heart's content. Simply mix and match to create the combination that reflects your personal style. Liven things up with a mixture of different pastels. Create bold contrasts in black and white. Or tone it down with matching sets.

Versatile and compact, the CORAIL chairs and tables are ideal for urban gardens and balconies. Robust aluminium slats provide excellent seating comfort, with or without cushions. This lightweight collection is easily moved to your favourite outdoor spot. And even the tables can be conveniently dismantled to save storage space.



CORAIL
10/11

**BASK IN THE SUN
CATCH THE BREEZE**



CORAIL

12/13



**LIGHTWEIGHT AND PRACTICAL.
STACK TO SAVE SPACE.**

CORAIL

14/15



**SPECIAL SLOTS ENSURE
CUSHIONS ARE EASILY
FIXED. AND REMAIN IN
PLACE.**



**A SEAMLESS FIT WITH SMOOTH
POWDER-COATED FINISH.**

**AVID SUN SEEKERS ARE ALL SET TO
MAKE THE MOST OF EVERY RAY OF
SUNSHINE WITH THIS STACKABLE
AND PRACTICAL CORAIL SUN
LOUNGER.**





ARMCHAIR

- 100 100 0001 000 ■ ANTHRACITE
- 100 100 0003 000 □ WHITE



CHAIR

- 100 101 0001 000 ■ ANTHRACITE
- 100 101 0003 000 □ WHITE



ADJUSTABLE SUN LOUNGER

- 100 111 0045 000 ■ ANTHRACITE
- 100 111 0003 000 □ WHITE
- 100 111 0011 000 ■ GREY
- 100 111 0040 000 ■ PASTEL BLUE
- 100 111 0043 000 ■ PASTEL GREEN
- 100 111 0047 000 ■ PASTEL PINK



**“LOOK DEEP INTO
NATURE, AND
THEN **YOU WILL**
UNDERSTAND
EVERYTHING
BETTER.”**

ALBERT EINSTEIN

PHYSICIST, PHILOSOPHER, SPEAKER

COCO

Get into the groove

Meet the new kid on the block. A chair with the winning personality of a style icon. COCO's allure is unmistakable from afar, and irresistible up close. Designed to stand out in a crowd, this chair brings a sophisticated sense of leisure to that outdoor space where having a good time is always on the menu.

COCO's funky flair is defined by its original blend of materials. Steel frame and aluminium seat panels are powder coated in the same colour to form a striking ensemble. Elegant teak legs heighten the contrast.



COCO
24/25

SETTING THE NEW STANDARD FOR OUTDOOR DINING

COCO WITH THE MACHAR TEAK TOP
DINING TABLE.





**SETTING THE NEW STANDARD
FOR OUTDOOR DINING.**



COCO
26/27

**COCO WITH
ALUMINIUM
LEGS**

STRIKING METAL AND TEAK FUSION.

COCO
28/29



BRING FLAIR TO EVERY TABLE

COCO WITH THE SERAC
DINING TABLE.





ARMCHAIR

ALUMINIUM/TEAK LEGS

ALUMINIUM LEGS

- 110 100 0001 000 ■ ANTHRACITE
110 100 0003 000 □ WHITE
110 100 0028 000 ■ OLIVE GREEN
110 100 0066 000 ■ LEMON

- 120 100 0001 000 ■ ANTHRACITE
120 100 0003 000 □ WHITE
120 100 0028 000 ■ OLIVE GREEN
120 100 0066 000 ■ LEMON



CHAIR

ALUMINIUM/TEAK LEGS

ALUMINIUM LEGS

- 110 101 0001 000 ■ ANTHRACITE
110 101 0003 000 □ WHITE
110 101 0028 000 ■ OLIVE GREEN
110 101 0066 000 ■ LEMON

- 120 101 0001 000 ■ ANTHRACITE
120 101 0003 000 □ WHITE
120 101 0028 000 ■ OLIVE GREEN
120 101 0066 000 ■ LEMON



**“THE FUTURE
BELONGS TO THOSE
WHO BELIEVE IN
THE BEAUTY OF
THEIR DREAMS.”**

ELEANOR ROOSEVELT
FORMER FIRST LADY OF THE UNITED STATES

MUZE

Modern Chic

Modern, minimalist design defined by graphic clean lines. Meet your inspiration – Muze!

Dark anthracite powder coated stainless steel frames are accentuated by gently curved seats in grey outdoor fabric, thoughtfully considered and chosen for both comfort and to withstand the harsh outdoor conditions.

Stackable, lightweight and extremely comfortable, Muze is the perfect match for the entire range of Oasiq's dining tables.





ARMCHAIR

- | | |
|------------------|-----------------|
| 130 100 1101 000 | GREY/ANTHRACITE |
| 130 100 0303 000 | WHITE/WHITE |



**POWDER COATED STAINLESS
STEEL AND OUTDOOR FABRIC
UNITE TO CREATE A MODERN,
MINIMALIST LOOK.**



**“THE BEST AND MOST
BEAUTIFUL THINGS IN
THE WORLD CANNOT
BE SEEN OR EVEN
TOUCHED, **THEY MUST
BE FELT WITH THE
HEART.**”**

HELEN KELLER

AUTHOR, SPEAKER, ACTIVIST

SKAGEN

Form Follows Function

Modern design at its best! The new Skagen collection is a take on classic Scandinavian furniture design that combines expertly crafted teak and handwoven outdoor rope to create a contemporary yet timelessly elegant dining chair collection. True to its roots, Skagen's organic shapes and contrasting clean lines are developed to be functional and to create ergonomic dining chairs, which can be used inside or out.

The Skagen dining chairs are accompanied by either a generously proportioned, matching dining table with slatted teak table top or a substantial extending teak table offering room for up to twelve people, perfect for a get together and entertaining larger groups. A striking deck chair and footstool with comfortable weatherproof outdoor cushions for the finishing touch reflect the dining chair design and further enhance the Skagen collection.



SKAGEN

44/45

**SUPERBLY CRAFTED TEAK AND
HANDWOVEN ROPE IN
ANTHRACITE. SKAGEN DINING
CHAIRS ARE STACKABLE AND
UNMISTAKEABLY SCANDINAVIAN.**



**SKAGEN ARM CHAIRS, SIDE
CHAIRS AND TEAK EXTENDING
DINING TABLE OFFER AMPLE
SPACE FOR ENTERTAINING.**

SKAGEN
46/47



SKAGEN

48/49



EXTENDING MADE EASY – SIMPLY PULL OUT THE TABLE TOP HALVES AT EITHER END AND REVEAL THE HIDDEN EXTENSION LEAVES.



THE BUTTERFLY MECHANISM ALLOWS FOR THE TEAK EXTENSIONS TO BOTH FOLD OUT AND AFTER USE BE STORED IN SECONDS.

SKAGEN

50/51

**SKAGEN DECK CHAIR OFFERS THREE
RECLINING POSITIONS COMBINED WITH
LUXURIOUS CUSHIONS AND A MATCHING
FOOTSTOOL FOR PURE RELAXATION IN
COMFORT AND STYLE.**



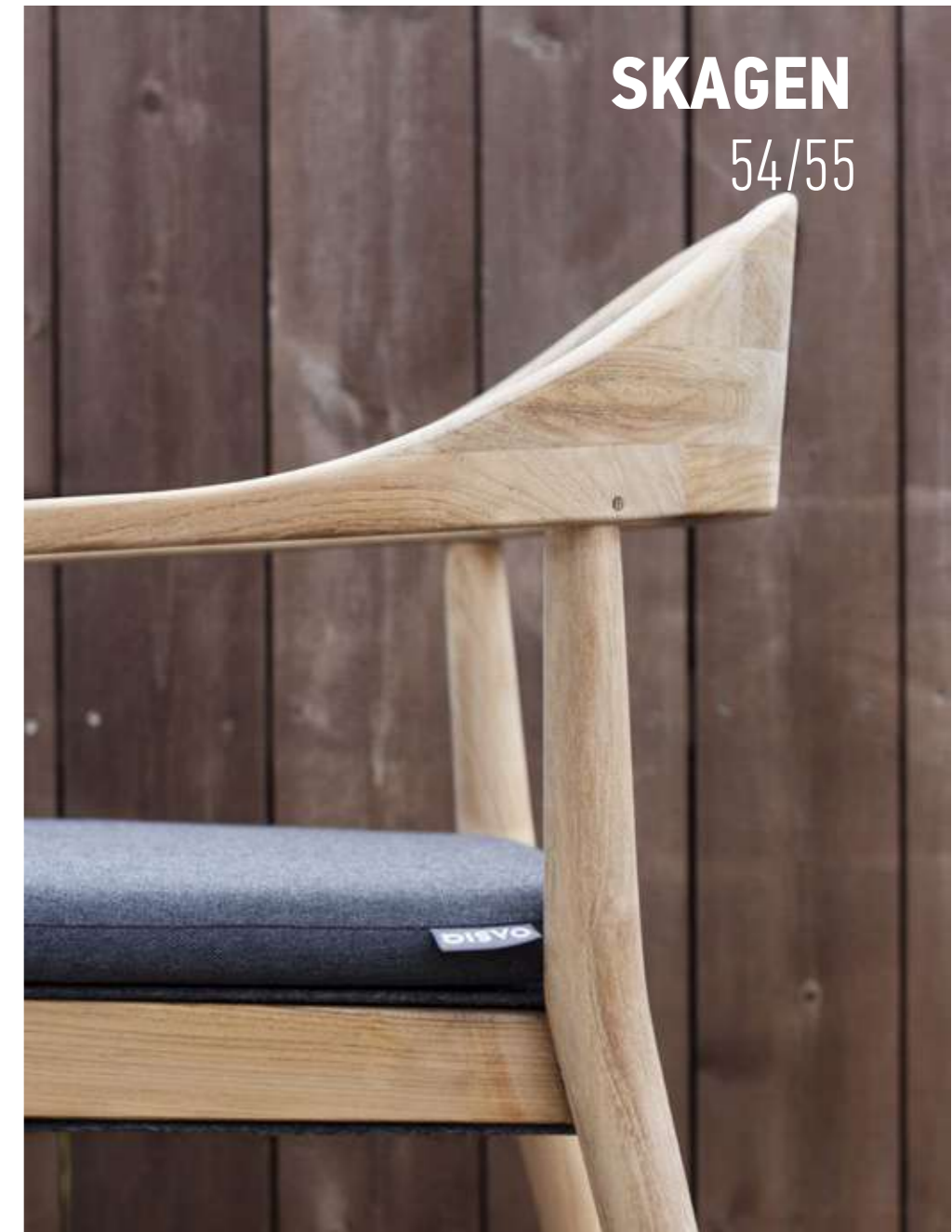
SKAGEN

52/53



**TACTILE TEAK AND
HANDWOVEN OUTDOOR
ROPE. EXCELLENT
CRAFTSMANSHIP
INSPIRED BY
SCANDINAVIAN DESIGN
FOR THE ULTIMATE
STYLE STATEMENT.**





SKAGEN
54/55

**COPENHAGEN ARM CHAIRS AND
SKAGEN DINING TABLE. IDEAL FOR
CREATING COUNTLESS BEAUTIFUL
MOMENTS OUTSIDE.**

SKAGEN

56/57



SKAGEN

58/59



ARMCHAIR

250 100 3401 000 TEAK/ANTHRACITE ROPE



SIDE CHAIR

250 101 3401 000 TEAK/ANTHRACITE ROPE



COPENHAGEN ARMCHAIR

250 102 3401 000 TEAK/ANTHRACITE ROPE



ADJUSTABLE DECK CHAIR

250 103 3401 000 TEAK/ANTHRACITE ROPE



FOOTSTOOL

250 110 3401 000 TEAK/ANTHRACITE ROPE



DINING TABLE

250 108 0034 234 TEAK



EXTENSION DINING TABLE

250 109 0034 234 TEAK



**“KEEP YOUR FACE
ALWAYS TOWARD
THE SUNSHINE -
AND SHADOWS WILL
FALL BEHIND YOU.”**

WALT WHITMAN
POET

DIUNA

Chic your teak

Teak now has flair to spare. Indoors or out, DIUNA steals the show with panache. This unrivalled design relies on superior craftsmanship to sculpt sturdy teak to ultimate elegance. The result is a breath of fresh air. From now on, dining, lounging and sunbathing are truly chic on teak.

DIUNA perfectly balances refined clean lines with organic curves that highlight the wood's beautiful sandy grain. Slender panels of layered teak have been specially designed and crafted to ensure solidity with a graceful touch. This makes the furniture exceptionally lightweight for its kind, and all models are stackable.



DIUNA
64/65

DINING ON NATURE'S LAP



**STACKABLE.
INGENIOUS
CUSHION SLOTS.**

DIUNA
66/67



DIUNA
68/69



DIUNA
70/71

**CRAFTED TO
PERFECTION**



**SUPERBLY
SCULPTED
CURVES.**



DIUNA
72/73



**STYLISH.
COMFORTABLE.
100% WEATHERPROOF
CUSHIONS.**

DIUNA

74/75



ARMCHAIR

200 100 3434 000 TEAK



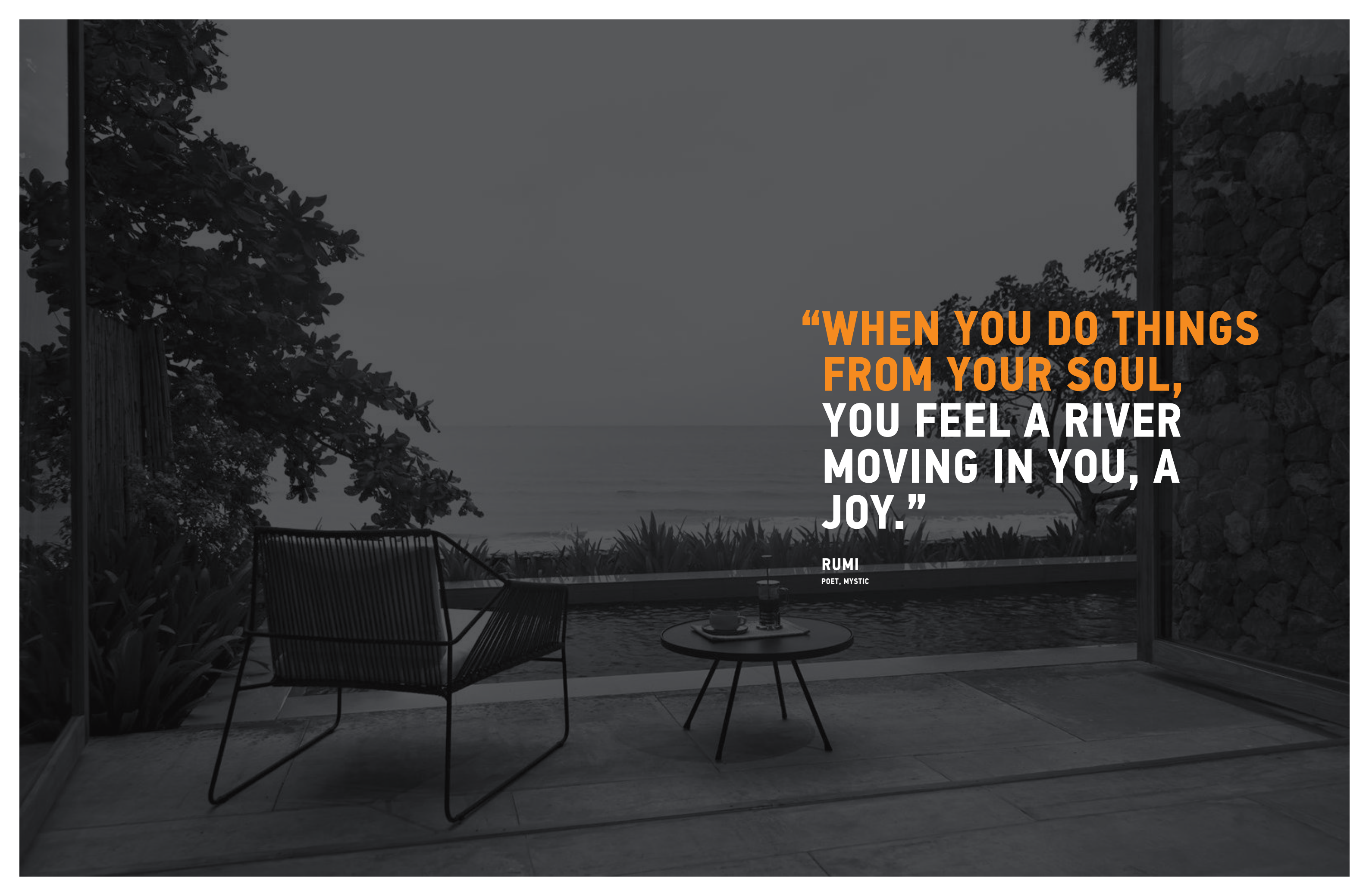
CHAIR

200 101 3434 000 TEAK



ADJUSTABLE SUN LOUNGER

200 103 3434 000 TEAK



**“WHEN YOU DO THINGS
FROM YOUR SOUL,
YOU FEEL A RIVER
MOVING IN YOU, A
JOY.”**

RUMI
POET, MYSTIC

SANDUR

Sitting pretty

On SANDUR you are almost suspended in thin air. And, as everyone knows, it doesn't get more comfortable than that. All thanks to a nifty design that uses a unique open weave to reduce contact with hard surfaces to a minimum. On this eye-catcher, you're always sitting pretty.

SANDUR's distinctive patterns accentuate the breezy character of this model. A tubular stainless steel frame supports a strong and weatherproof rope weave. The rope is handwoven on to the frame by skilful artisans who take pride in the outstanding quality of their work. With a variety of stylish colour combinations, this collection is ideal for any outdoor setting.



SANDUR
80/81

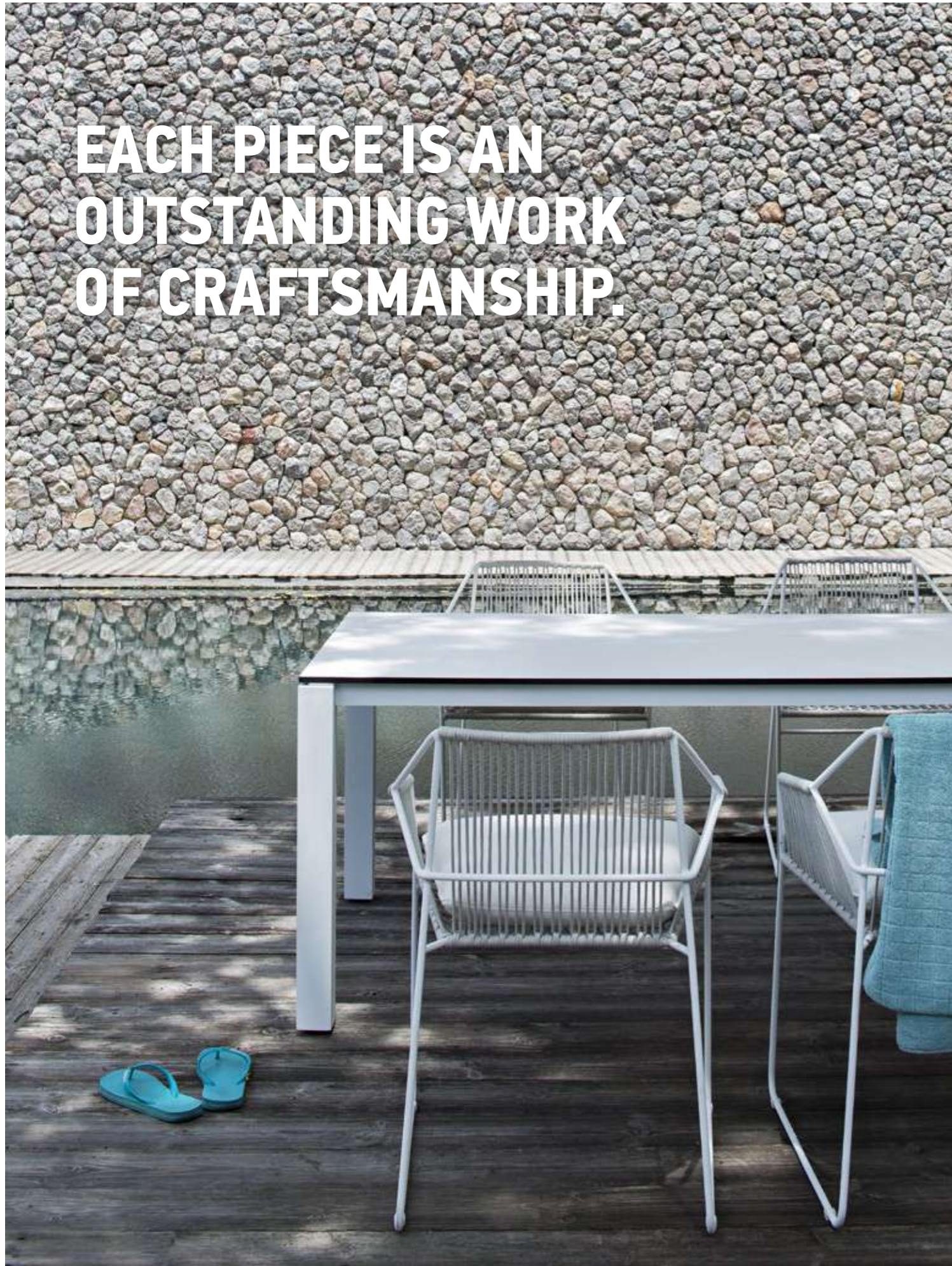


SANDUR
82/83

**DISTINCTIVE IN
EVERY LAST DETAIL**

EACH PIECE IS AN
OUTSTANDING WORK
OF CRAFTSMANSHIP.

SANDUR
84/85





SANDUR
86/87

**SITTING PRETTY IN SANDUR'S NEW COLOUR
ROPE IN SOPHISTICATED ANTHRACITE.**

SANDUR

88/89





**CATCH THE BREEZE
IN STYLE.**



SANDUR
90/91

**SANDUR'S HANDWOVEN ROPE
SEAT AND SLENDER STAINLESS
STEEL FRAME ARE TAKEN TO
NEW HEIGHTS WITH THESE
DELIGHTFUL BAR STOOLS.**

**PUT YOUR FEET
UP AND RELAX**

SANDUR
92/93



**THE SANDUR FOOTSTOOL
REFLECTS THE DISTINCTIVE
CONTOURS OF ITS MATCHING
ARMCHAIR AND ENHANCES
ITS SUPERB SITTING
COMFORT.**



SANDUR
94/95

**WITH AMPLE SPACE FOR TWO,
THE INVITING SANDUR 2-SEATER
IS MADE FOR SHARING THE BEST
THINGS IN LIFE.**



**TRENDY TWOSOME.
SANDUR 2-SEATER WITH
SERAC COFFEE TABLE.**

SANDUR
96/97



**STEEL FRAME.
UNIQUE OPEN WEAVE.
COMFORTABLE
CUSHIONS.**



SANDUR
98/99

**RELAXATION IN
ITS PUREST FORM**



SANDUR
100/101

**SANDUR BRINGS A NEW SENSE
OF STYLE TO THOSE PRECIOUS
MOMENTS OF LEISURE IN THE SUN.**



SANDUR

102/103

**UNRIVALLED REFINEMENT
FROM EVERY ANGLE.**



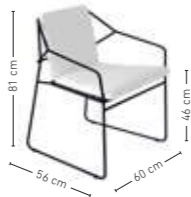
SANDUR

104/105



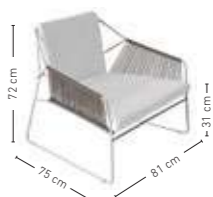
ARMCHAIR FULL WOVEN

300 100 5500 060	TAUPE/STAINLESS STEEL
300 100 5501 060	TAUPE/ANTHRACITE
300 100 0303 060	WHITE/WHITE
300 100 2303 060	CLAY/WHITE
300 100 5301 060	TERRA COTTA/ANTHRACITE
300 100 5303 060	TERRA COTTA/WHITE
300 100 0101 060	ANTHRACITE/ANTHRACITE



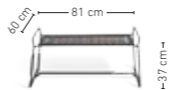
ARMCHAIR SEAT/BACK WOVEN

300 101 5500 060	TAUPE/STAINLESS STEEL
300 101 5501 060	TAUPE/ANTHRACITE
300 101 0303 060	WHITE/WHITE
300 101 2303 060	CLAY/WHITE
300 101 5301 060	TERRA COTTA/ANTHRACITE
300 101 5303 060	TERRA COTTA/WHITE



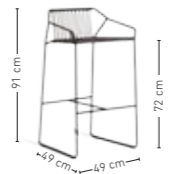
CLUB ARMCHAIR

300 102 5500 081	TAUPE/STAINLESS STEEL
300 102 5501 081	TAUPE/ANTHRACITE
300 102 0303 081	WHITE/WHITE
300 102 2303 081	CLAY/WHITE
300 102 5301 081	TERRA COTTA/ANTHRACITE
300 102 0101 081	ANTHRACITE/ANTHRACITE



FOOTSTOOL

300 110 5500 000	TAUPE/STAINLESS STEEL
300 110 5501 000	TAUPE/ANTHRACITE
300 110 0303 000	WHITE/WHITE
300 110 2303 000	CLAY/WHITE
300 110 5301 000	TERRA COTTA/ANTHRACITE
300 110 0101 000	ANTHRACITE/ANTHRACITE



BARSTOOL WITH ARM

300 103 5500 000	TAUPE/STAINLESS STEEL
300 103 5501 000	TAUPE/ANTHRACITE
300 103 0303 000	WHITE/WHITE
300 103 2303 000	CLAY/WHITE



BARSTOOL

300 104 5500 000	TAUPE/STAINLESS STEEL
300 104 5501 000	TAUPE/ANTHRACITE
300 104 0303 000	WHITE/WHITE
300 104 2303 000	CLAY/WHITE



2-SEATER

300 105 5500 000	TAUPE/STAINLESS STEEL
300 105 5501 000	TAUPE/ANTHRACITE
300 105 0303 000	WHITE/WHITE
300 105 2303 000	CLAY/WHITE
300 105 5301 000	TERRA COTTA/ANTHRACITE
300 105 0101 000	ANTHRACITE/ANTHRACITE



ADJUSTABLE SUN LOUNGER

300 111 5500 000	TAUPE/STAINLESS STEEL
300 111 5501 000	TAUPE/ANTHRACITE
300 111 0303 000	WHITE/WHITE
300 111 2303 000	CLAY/WHITE
300 111 5301 000	TERRA COTTA/ANTHRACITE
300 111 0101 000	ANTHRACITE/ANTHRACITE



**“THE REAL VOYAGE OF
DISCOVERY IS NOT
IN SEEKING NEW
LANDSCAPES **BUT IN**
HAVING NEW EYES.”**

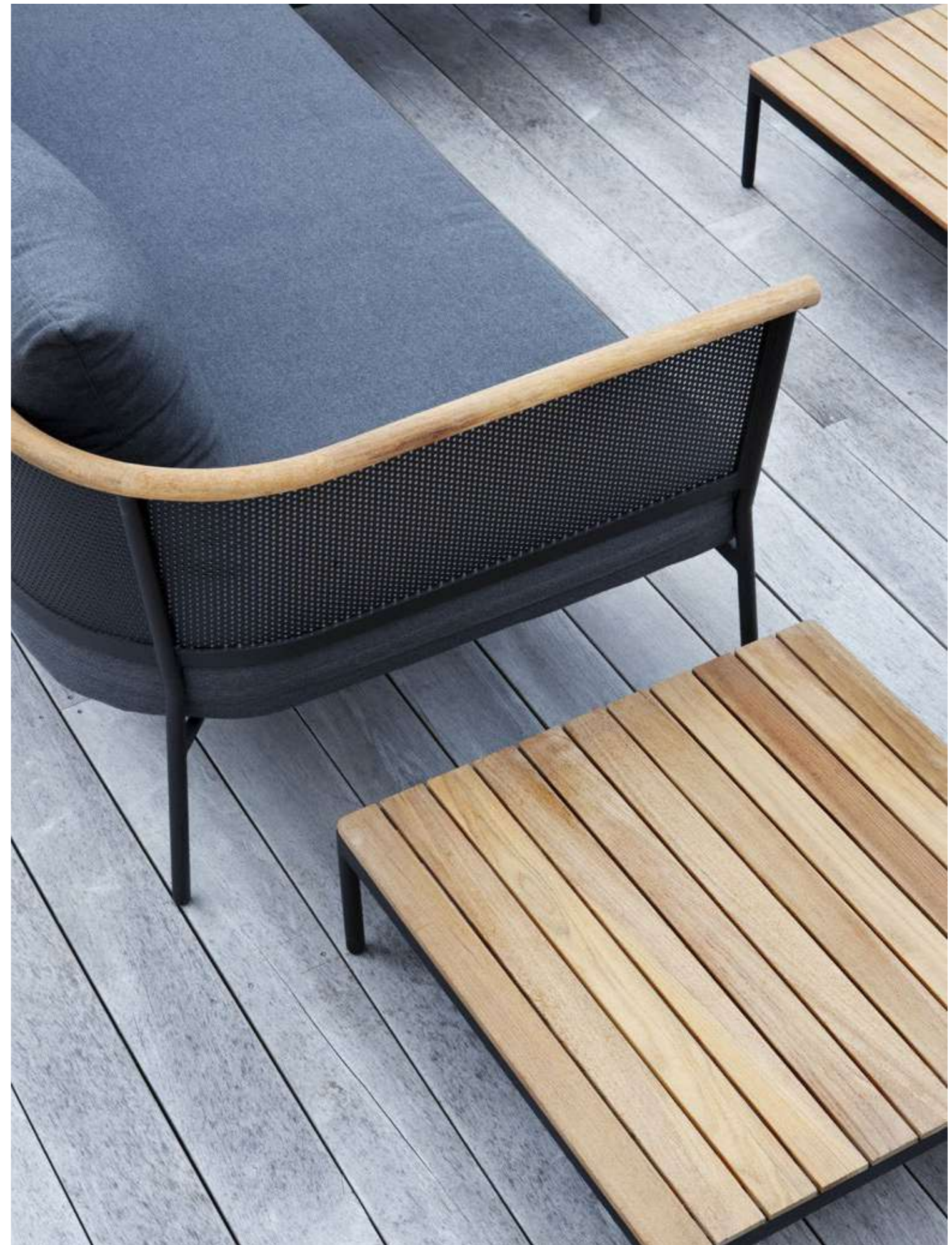
MARCEL PROUST
NOVELIST

RIAD

Transparent stylish curves

Defined by transparency and lightness, Riad takes its inspiration from mid-twentieth century furniture designs by French designer Mathieu Matégot. Softly curved perforated aluminium frames, tactile rounded teak armrests and weatherproof luxurious cushions combine to create a beautifully proportioned modular sofa system, offering the perfect setting for relaxing and sharing quality time outdoors.

Available in three stylish colours - anthracite, white or pastel green, the Riad collection consists of an eye-catching club armchair, a 2-seater sofa and six different seating modules to create almost limitless individual design possibilities. A rectangular coffee table and a square side table with either matching ceramic or contrasting teak tops complete this elegant and welcoming lounge collection.



RIAD

110/111



LIGHTEN UP YOUR OUTDOOR SPACE WITH A STRIKING RIAD CLUB CHAIR, A WELCOMING COMBINATION OF DIFFERENT RIAD SOFA MODULES IN ANTHRACITE AND A MATCHING SIDE TABLE WITH TEAK TOP.



**PERFORATED ALUMINIUM
COMBINED WITH TACTILE TEAK
CREATE A LIGHT FILLED DESIGN
STATEMENT WITH RIAD.**



RIAD

114/115



**TEA FOR TWO
- RIAD SOFA
IN WHITE WITH
MATCHING SIDE
TABLE.**



RIAD

116/117



CLUB ARM CHAIR 100CM

- 410 100 0001 100 ■ ANTHRACITE
410 100 0003 100 □ WHITE
410 100 0043 100 ■ PASTEL GREEN



CORNER SEAT 100CM LEFT

- 410 104 0001 100 ■ ANTHRACITE
410 104 0003 100 □ WHITE
410 104 0043 100 ■ PASTEL GREEN



CORNER SEAT 100CM RIGHT

- 410 105 0001 100 ■ ANTHRACITE
410 105 0003 100 □ WHITE
410 105 0043 100 ■ PASTEL GREEN



COFFEE TABLE

ALUMINIUM/TEAK TOP

- 410 109 0134 122 ANTHRACITE FRAME/TEAK TOP
410 109 0334 122 WHITE FRAME/TEAK TOP
410 109 4334 122 PASTEL GREEN FRAME/TEAK TOP



ALUMINIUM/CERAMIC TOP

- 413 109 0145 122 ANTHRACITE FRAME/CERAMIC TOP ANTHRACITE
413 109 0111 122 ANTHRACITE FRAME/CERAMIC TOP GREY
413 109 0303 122 WHITE FRAME/CERAMIC TOP WHITE
413 109 4311 122 PASTEL GREEN FRAME/CERAMIC TOP GREY



SOFA 200CM

- 410 106 0001 200 ■ ANTHRACITE
410 106 0003 200 □ WHITE
410 106 0043 200 ■ PASTEL GREEN



2-SEATER 180CM ARM LEFT

- 410 101 0001 180 ■ ANTHRACITE
410 101 0003 180 □ WHITE
410 101 0043 180 ■ PASTEL GREEN



2-SEATER 180CM ARM RIGHT

- 410 102 0001 180 ■ ANTHRACITE
410 102 0003 180 □ WHITE
410 102 0043 180 ■ PASTEL GREEN



SIDE TABLE 74X74CM

ALUMINIUM/TEAK TOP

- 410 110 0134 074 ANTHRACITE FRAME/TEAK TOP
410 110 0334 074 WHITE FRAME/TEAK TOP
410 110 4334 074 PASTEL GREEN FRAME/TEAK TOP



ALUMINIUM/CERAMIC TOP

- 413 110 0145 074 ANTHRACITE FRAME/CERAMIC TOP ANTHRACITE
413 110 0111 074 ANTHRACITE FRAME/CERAMIC TOP GREY
413 110 0303 074 WHITE FRAME/CERAMIC TOP WHITE
413 110 4311 074 PASTEL GREEN FRAME/CERAMIC TOP GREY



CENTER SOFA 160CM

- 410 103 0001 160 ■ ANTHRACITE
410 103 0003 160 □ WHITE
410 103 0043 160 ■ PASTEL GREEN



CORNER SEAT 85CM

- 410 107 0001 085 ■ ANTHRACITE
410 107 0003 085 □ WHITE
410 107 0043 085 ■ PASTEL GREEN



**“YOU ONLY LIVE
ONCE, BUT IF
YOU DO IT RIGHT,
ONCE IS ENOUGH.”**

MAE WEST
ACTRESS, SINGER, SCREENWRITER

MARO

Chill out with a twist

Ready to take the art of relaxation to the next level? MARO's excellently proportioned teak frame supports king-sized cushions for an opulent lounging experience. Fitted cushions pamper you with their superior comfort. The simple lines of the handwoven rope add a playful twist to the sturdy teak frame.

MARO's modular elements offer the versatility expected of modern outdoor furniture. The sofa and oversized club chairs turn a terrace into an inviting outdoor retreat. Various chaise longue and corner seat combos introduce a clubby vibe to set the scene for entertaining.



MARO
122/123

LAVISH OUTDOOR LEISURE

ATTOL SIDE TABLES FOR
AN ALL-TEAK MOTIF.



MARO
124/125

**3 SEATER SOFA, CORNER SOFA
AND LAZY LOUNGE CHAIR FOR
COSY RELAXATION.**



**TRANSFORM THIS MARO SIDE TABLE INTO AN
OPULENT OTTOMAN IN THE BLINK OF AN EYE
WITH THE HELP OF THE FITTED CUSHION.**



**EXTRA LONG COFFEE TABLE THAT
MATCHES UP TO ANY LOUNGE COMBO
OF MARO MODULAR ELEMENTS.**

MARO

126/127



CLUB ARMCHAIR

201 100 3434 090 TEAK/CLAY
SEAT HEIGHT: 37 CM EXCL. CUSHION



CHAISE LONGUE RIGHT

201 103 3434 150 TEAK/CLAY
SEAT HEIGHT: 37 CM EXCL. CUSHION



2-SEATER CORNER RIGHT

201 101 3434 225 TEAK/CLAY
SEAT HEIGHT: 37 CM EXCL. CUSHION



CHAISE LONGUE LEFT

201 104 3434 150 TEAK/CLAY
SEAT HEIGHT: 37 CM EXCL. CUSHION



2-SEATER CORNER LEFT

201 102 3434 225 TEAK/CLAY
SEAT HEIGHT: 37 CM EXCL. CUSHION



3-SEATER SOFA

201 105 3434 225 TEAK/CLAY
SEAT HEIGHT: 37 CM EXCL. CUSHION



COFFEE TABLE

201 109 3434 132 TEAK



FOOTSTOOL

201 110 3434 088 TEAK

A dark, moody photograph of a stone building with a patio and pool. The building's exterior is made of rough-hewn stone. A large glass door is open, revealing a patio area with a lounge chair and a small table. In the foreground, a swimming pool is visible, reflecting the light. The background shows some foliage and a fence.

**“DO NOT COUNT THE
DAYS; MAKE THE
DAYS COUNT.”**

MUHAMMAD ALI
BOXER

YLAND

Flex to the max

Six components, two finishes, endless combinations. Thanks to YLAND's unsurpassed flexibility, you will solve the puzzle every time. Build a daybed for daydreaming, a lounge sofa for night-time entertaining. Turn it into a family-sized couch, or just divide it up into separate islands.

YLAND's design takes modular flexibility to the next level. A lightweight aluminium and open-weave frame makes it easy to explore its multiple uses. And to top it off you can customize your YLAND with the outdoor cushions of your choice. Both the covers and fillings are guaranteed to be weatherproof 24/7.



YLAND
132/133





**OUTDOOR STYLE
AND COMFORT.
RUGS TO MATCH.**



**DURABLE ROPE WEAVE.
100% WEATHERPROOF
CUSHIONS.**

YLAND

136/137



2-SEATER ARM LEFT

400 101 5501 134 TAUPE/ANTHRACITE
400 101 0303 134 WHITE/WHITE
SEAT HEIGHT: 28 CM EXCL. CUSHION



CORNER SEAT

400 104 5501 080 TAUPE/ANTHRACITE
400 104 0303 080 WHITE/WHITE
SEAT HEIGHT: 28 CM EXCL. CUSHION



2-SEATER ARM RIGHT

400 102 5501 134 TAUPE/ANTHRACITE
400 102 0303 134 WHITE/WHITE
SEAT HEIGHT: 28 CM EXCL. CUSHION



CHAISE LONGUE LEFT

400 105 5501 134 TAUPE/ANTHRACITE
400 105 0303 134 WHITE/WHITE
SEAT HEIGHT: 28 CM EXCL. CUSHION



1-SEATER

400 103 5501 069 TAUPE/ANTHRACITE
400 103 0303 069 WHITE/WHITE
SEAT HEIGHT: 28 CM EXCL. CUSHION



CHAISE LONGUE RIGHT

400 106 5501 134 TAUPE/ANTHRACITE
400 106 0303 134 WHITE/WHITE
SEAT HEIGHT: 28 CM EXCL. CUSHION





**“ONE TOUCH OF
NATURE MAKES
THE WHOLE
WORLD KIN.”**

WILLIAM SHAKESPEARE
POET, PLAYWRIGHT

REEF

Meet your match

A uniquely all-round table that suits any occasion and any style. The REEF collection of tables offers a choice of aluminium or stainless steel frames in various sizes. All of these can be contrasted to great effect with a sturdy teak top. A brushed stainless steel or aluminium version with matching weather-resistant HPL surface is also available for a sharper look.



**MATCHLESS RANGE
OF STYLES AND SIZES.**







REEF

144/145



TABLE 100X100X75CM

STAINLESS STEEL FRAME

ALUMINIUM FRAME

- 500 110 3434 100 SS FRAME/TEAK TOP
- 500 100 0001 100 SS FRAME/BLACK HPL TOP
- 500 100 0003 100 SS FRAME/WHITE HPL TOP
- 500 101 0045 100 SS FRAME/NORDIC BLACK HPL TOP

- 500 130 0001 100 ANTHRACITE FRAME/TEAK TOP
- 500 130 0003 100 WHITE FRAME/TEAK TOP
- 500 120 0001 100 ANTHRACITE FRAME/BLACK HPL TOP
- 500 120 0003 100 WHITE FRAME/WHITE HPL TOP
- 500 121 0045 100 ANTHRACITE FRAME/NORDIC BLACK HPL TOP



TABLE 180X100X75CM

STAINLESS STEEL FRAME

ALUMINIUM FRAME

- 500 110 3434 180 SS FRAME/TEAK CROSS BAR/TEAK TOP
- 500 102 0034 180 SS FRAME/SS CROSS BAR/TEAK TOP
- 500 100 0001 180 SS FRAME/SS CROSS BAR/BLACK HPL TOP
- 500 100 0003 180 SS FRAME/SS CROSS BAR/WHITE HPL TOP
- 500 101 0045 180 SS FRAME/SS CROSS BAR/NORDIC BLACK HPL TOP

- 500 130 0134 180 ANTHRACITE FRAME/TEAK CROSS BAR/TEAK TOP
- 500 130 0334 180 WHITE FRAME/TEAK TOP/TEAK CROSS BAR
- 500 120 0001 180 ANTHRACITE FRAME/ANTHRACITE CROSS BAR/BLACK HPL TOP
- 500 120 0003 180 WHITE FRAME/WHITE CROSS BAR/ WHITE HPL TOP
- 500 121 0045 180 ANTHRACITE FRAME/ANTHRACITE CROSS BAR/NORDIC BLACK HPL TOP



TABLE 240X100X75CM

STAINLESS STEEL FRAME

ALUMINIUM FRAME

- 500 110 3434 240 SS FRAME/TEAK CROSS BAR/TEAK TOP
- 500 102 0034 240 SS FRAME/SS CROSS BAR/TEAK TOP
- 500 100 0001 240 SS FRAME/SS CROSS BAR/BLACK HPL TOP
- 500 100 0003 240 SS FRAME/SS CROSS BAR/WHITE HPL TOP
- 500 101 0045 240 SS FRAME/SS CROSS BAR/NORDIC BLACK HPL TOP

- 500 130 0134 240 ANTHRACITE FRAME TEAK CROSS BAR/TEAK TOP
- 500 130 0334 240 WHITE FRAME/TEAK TOP/TEAK CROSS BAR
- 500 120 0001 240 ANTHRACITE FRAME/ANTHRACITE CROSS BAR/BLACK HPL TOP
- 500 120 0003 240 WHITE FRAME/WHITE CROSS BAR/ WHITE HPL TOP
- 500 121 0045 240 ANTHRACITE FRAME/ANTHRACITE CROSS BAR/ NORDIC BLACK HPL TOP

MACHAR

Set to impress

The centrepiece of your outdoor dining space, MACHAR is a table of grand proportions and fine lines. Take your pick from black or white aluminium frames with matching aluminium legs or with contrasting teak legs. These are splendidly topped off with durable and weather-resistant Trespa® HPL, stunning teak or sleek ceramic tops. MACHAR is always set to impress with its spacious dimensions and magnificent stature.



**IMPRESSIVE DIMENSIONS.
UNSURPASSED
SIMPLICITY.**



MACHAR

148/149

**MACHAR'S ROBUST TEAK LEGS AND HPL
SURFACE FORM A CHARMING CONTRAST.**



**MACHAR WITH
DIUNA TEAK CHAIRS.**



MACHAR

150/151

**TEAK'S ORGANIC BEAUTY SHEDS
NEW LIGHT ON MACHAR'S GRAND
PROPORTIONS, REVEALING YET
ANOTHER WONDERFUL SIDE OF
THIS IMPRESSIVE DINING TABLE.**

**COCO CHAIRS WITH THE MACHAR
TEAK TOP DINING TABLE.**



SOPHISTICATED BY NATURE

**MACHAR'S SPACIOUS DIMENSIONS
ACHIEVE A NEW LEVEL OF FINESSE
WITH SLEEK CERAMIC TOPS.**



**SLEEK CERAMIC ADDS POLISH
AND SOPHISTICATION TO THE
MACHAR DINING TABLE.**

MACHAR
154/155



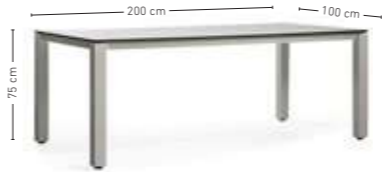
MACHAR
156/157

**FEATURING A MARBLED WHITE,
DURABLE AND STAIN-RESISTANT
CERAMIC TOP, MACHAR OFFERS
AN EXQUISITELY SOPHISTICATED
NATURAL LOOK.**

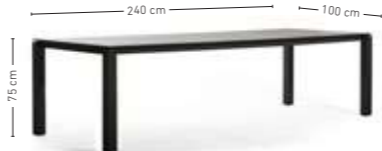


MACHAR

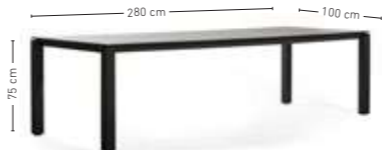
158/159



HPL TOP TABLE 200X100X75CM	ALUMINIUM LEGS	TEAK LEGS
	600 100 0001 200 ANTHRACITE FRAME/BLACK HPL TOP	600 110 3401 200 ANTHRACITE FRAME/BLACK HPL TOP
	600 101 0045 200 ANTHRACITE FRAME/NORDIC BLACK HPL TOP	600 111 3445 200 ANTHRACITE FRAME/NORDIC BLACK HPL TOP
	600 100 0003 200 WHITE FRAME/WHITE HPL TOP	



HPL TOP TABLE 240X100X75CM	ALUMINIUM LEGS	TEAK LEGS
	600 100 0001 240 ANTHRACITE FRAME/BLACK HPL TOP	600 110 3401 240 ANTHRACITE FRAME/BLACK HPL TOP
	600 101 0045 240 ANTHRACITE FRAME/NORDIC BLACK HPL TOP	600 111 3445 240 ANTHRACITE FRAME/NORDIC BLACK HPL TOP
	600 100 0003 240 WHITE FRAME/WHITE HPL TOP	



HPL TOP TABLE 280X100X75CM	ALUMINIUM LEGS	TEAK LEGS
	600 100 0001 280 ANTHRACITE FRAME/BLACK HPL TOP	600 110 3401 280 ANTHRACITE FRAME/BLACK HPL TOP
	600 101 0045 280 ANTHRACITE FRAME/NORDIC BLACK HPL TOP	600 111 3445 280 ANTHRACITE FRAME/ NORDIC BLACK HPL TOP
	600 100 0003 280 WHITE FRAME/WHITE HPL TOP	

MACHAR

160/161



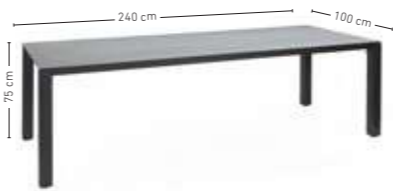
TEAK TOP DINING TABLE	ALUMINIUM LEGS	TEAK LEGS
200X100X75CM		200X100X75CM
600 100 0134 200	ANTHRACITE FRAME/ALU LEGS/ TEAK TOP	600 112 0134 200 ANTHRACITE FRAME/TEAK LEGS/TEAK TOP
600 100 0334 200	WHITE FRAME/ALU LEGS/TEAK TOP	600 112 0334 200 WHITE FRAME/TEAK LEGS/TEAK TOP
240X100X75CM		240X100X75CM
600 100 0134 240	ANTHRACITE FRAME/ALU LEGS/ TEAK TOP	600 112 0134 240 ANTHRACITE FRAME/TEAK LEGS/ TEAK TOP
600 100 0334 240	WHITE FRAME/ALU LEGS/TEAK TOP	600 112 0334 240 WHITE FRAME/TEAK LEGS/TEAK TOP
280X100X75CM		280X100X75CM
600 100 0134 280	ANTHRACITE FRAME/ALU LEGS/TEAK TOP	600 112 0134 280 ANTHRACITE FRAME/TEAK LEGS/ TEAK TOP
600 100 0334 280	WHITE FRAME/ALU LEGS/TEAK TOP	600 112 0334 280 WHITE FRAME/TEAK LEGS/TEAK TOP



CERAMIC TABLE TOP OPTIONS	WHITE	GREY	ANTHRACITE
---------------------------	-------	------	------------



DINING TABLE 200X100X75CM	CERAMIC TOP/ALUMINIUM LEGS
600 113 0303 200	WHITE FRAME WHITE CERAMIC TOP
600 113 0111 200	ANTHRACITE FRAME GREY CERAMIC TOP
600 113 0145 200	ANTHRACITE FRAME ANTHRACITE CERAMIC TOP



DINING TABLE 240X100X75CM	CERAMIC TOP/ALUMINIUM LEGS
600 113 0303 240	WHITE FRAME WHITE CERAMIC TOP
600 113 0111 240	ANTHRACITE FRAME GREY CERAMIC TOP
600 113 0145 240	ANTHRACITE FRAME ANTHRACITE CERAMIC TOP



DINING TABLE 280X100X75CM	CERAMIC TOP/ALUMINIUM LEGS
600 113 0303 280	WHITE FRAME WHITE CERAMIC TOP
600 113 0111 280	ANTHRACITE FRAME GREY CERAMIC TOP
600 113 0145 280	ANTHRACITE FRAME ANTHRACITE CERAMIC TOP

SERAC

Simply versatile

The SERAC tables are a model of distinctive design combined with down-to-earth versatility. Branched frames harmonise perfectly with slender tops. Available in various sizes and finishes, SERAC keeps it simple while rising to any occasion.

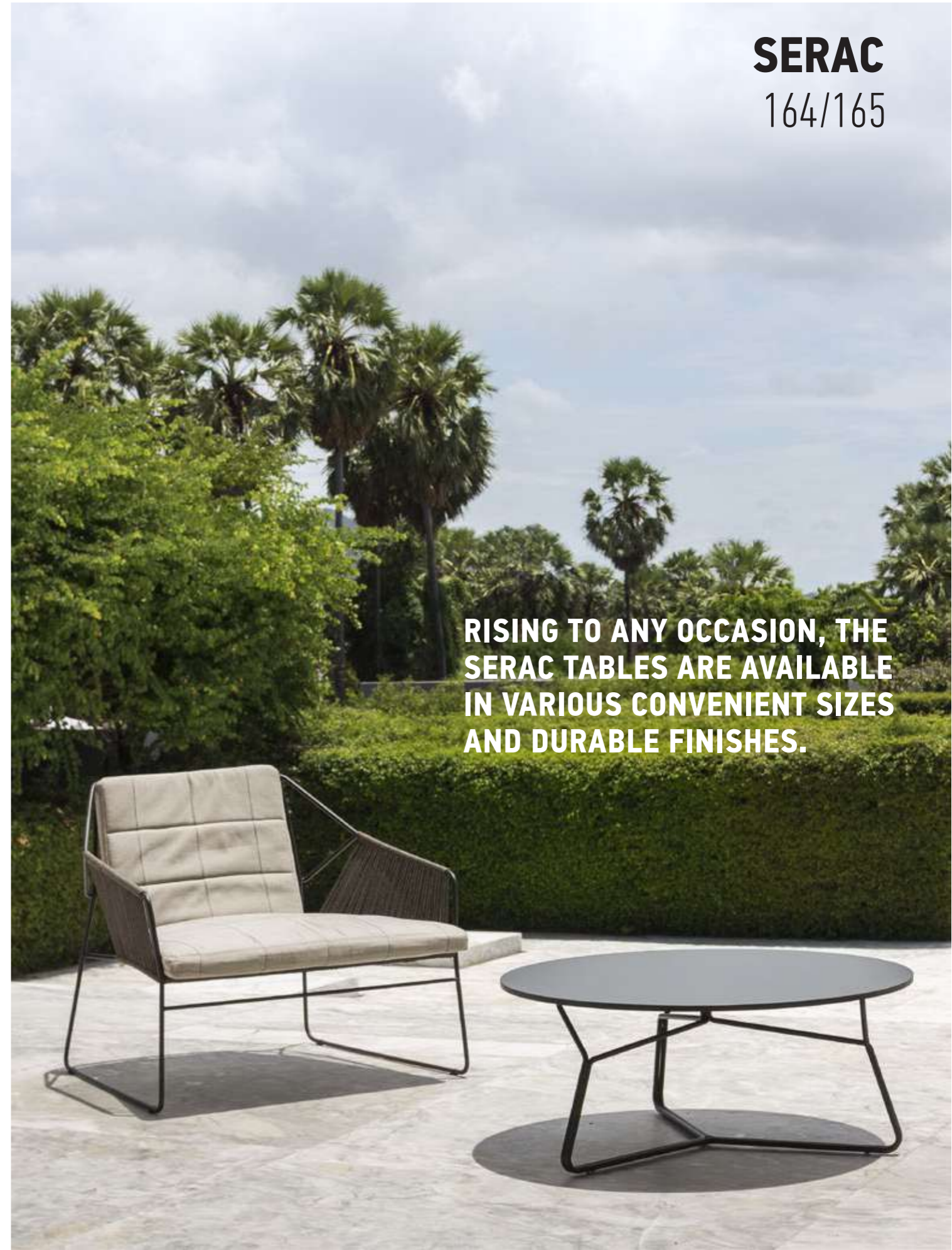


**SERAC'S BRANCHED
FRAME IS A PERFECT
HARMONY OF ELEGANCE
AND STABILITY.**



SERAC
164/165

**RIISING TO ANY OCCASION, THE
SERAC TABLES ARE AVAILABLE
IN VARIOUS CONVENIENT SIZES
AND DURABLE FINISHES.**



SERAC
166/167

**SERAC TABLE WITH MARBLED
WHITE, DURABLE AND STAIN-
RESISTANT CERAMIC TOP.**



SERAC

168/169

STAINLESS STEEL/HPL

STAINLESS STEEL/CERAMIC



COFFEE TABLE 85CM

800 100 0101 085 ANTHRACITE/BLACK
800 100 0303 085 WHITE/WHITE
800 100 0145 085 ANTHRACITE/NORDIC BLACK

800 113 0111 085 ANTHRACITE/GREY
800 113 0303 085 WHITE/WHITE
800 113 0145 085 ANTHRACITE/ANTHRACITE



DINING TABLE 105CM/99CM

800 100 0101 105 ANTHRACITE/BLACK
800 100 0303 105 WHITE/WHITE
800 100 0145 105 ANTHRACITE/NORDIC BLACK

800 113 0111 099 ANTHRACITE/GREY
800 113 0303 099 WHITE/WHITE
800 113 0145 099 ANTHRACITE/ANTHRACITE



DINING TABLE 72CM

800 100 0101 072 ANTHRACITE/BLACK
800 100 0303 072 WHITE/WHITE
800 100 0145 072 ANTHRACITE/NORDIC BLACK

800 113 0111 072 ANTHRACITE/GREY
800 113 0303 072 WHITE/WHITE
800 113 0145 072 ANTHRACITE/ANTHRACITE



SIDE TABLE 42CM

800 100 0101 042 ANTHRACITE/BLACK
800 100 0303 042 WHITE/WHITE
800 100 0145 042 ANTHRACITE/NORDIC BLACK

800 113 0111 042 ANTHRACITE/GREY
800 113 0303 042 WHITE/WHITE
800 113 0145 042 ANTHRACITE/ANTHRACITE



CERU

Space to spare

The CERU tables test the limits of less spacious areas. Their adaptability opens up new possibilities for turning a small terrace into an inviting meeting place. Or for creating a romantic rooftop dining area with space to spare.



CERU

172/173



THIS TRENDY TABLE FOR DINING OR BAR AREAS IS A HANDSOME OPTION IN POWDER-COATED ALUMINIUM FRAME AND TOP. ALSO STUNNING WITH AN HPL OR TEAK TOP.

CERU
174/175



CERU

176/177



DINING TABLE 70X70

801 100 0101 070	ANTHR./ALU ANTHRACITE TOP
801 100 0303 070	WHITE/ALU WHITE TOP
801 110 0101 070	ANTHR./HPL ANTHRACITE TOP
801 110 0303 070	WHITE/HPL WHITE TOP
801 120 0134 070	ANTHRACITE/TEAK TOP
801 120 0334 070	WHITE/TEAK TOP



DINING TABLE 80X80

801 100 0101 080	ANTHR./ALU ANTHRACITE TOP
801 100 0303 080	WHITE/ALU WHITE TOP
801 110 0101 080	ANTHR./HPL ANTHRACITE TOP
801 110 0303 080	WHITE/HPL WHITE TOP
801 120 0134 080	ANTHRACITE/TEAK TOP
801 120 0334 080	WHITE/TEAK TOP



BAR TABLE 70X70

802 100 0101 070	ANTHR./ALU ANTHRACITE TOP
802 100 0303 070	WHITE/ALU WHITE TOP
802 110 0101 070	ANTHR./HPL ANTHRACITE TOP
802 110 0303 070	WHITE/HPL WHITE TOP
802 120 0134 070	ANTHRACITE/TEAK TOP
802 120 0334 070	WHITE/TEAK TOP

ATTOL

Splendid sidekicks

The ATTOL side tables offer smaller surfaces in a flexibility optimizing variety of shapes, heights and materials.



ALUMINIUM

Powder-coated aluminium side tables in three practical heights and two attractive shapes. Easy to use whenever and wherever required.



TEAK

Round teak tables in three varying heights can be grouped to form one tiered table or split up into convenient side tables.

ATTOL
180/181



ATTOL
182/183

TEAK AND CERAMIC

**TOP OFF THE ATTOL
TEAK SIDE TABLES WITH
SLENDER CERAMIC IN
WHITE, GREY OR ANTHRACITE
FOR A SOPHISTICATED
FINISHING TOUCH.**

ATTOL

184/185



ALUMINIUM SIDE TABLE 45X45X49CM

700 100 0001 045 ANTHRACITE
700 100 0003 045 WHITE



ALUMINIUM SIDE TABLE 55X55X42CM

700 100 0001 055 ANTHRACITE
700 100 0003 055 WHITE



ALUMINIUM SIDE TABLE 60X35CM

700 100 0001 060 ANTHRACITE
700 100 0003 060 WHITE



TEAK SIDE TABLE 50X26CM

700 101 3434 050 TEAK



TEAK SIDE TABLE 60X46CM

700 101 3434 060 TEAK



TEAK SIDE TABLE 70X36CM60X35CM

700 101 3434 070 TEAK



TEAK/CERAMIC SIDE TABLE 50X26CM

700 102 3403 050 TEAK/WHITE
700 102 3411 050 TEAK/GREY
700 102 3445 050 TEAK/ANTHRACITE



TEAK/CERAMIC SIDE TABLE 60X46CM

700 102 3403 060 TEAK/WHITE
700 102 3411 060 TEAK/GREY
700 102 3445 060 TEAK/ANTHRACITE



TEAK/CERAMIC SIDE TABLE 70X36CM

700 102 3403 070 TEAK/WHITE
700 102 3411 070 TEAK/GREY
700 102 3445 070 TEAK/ANTHRACITE



A dark, moody photograph of a beach. In the foreground, two wooden lounge chairs are positioned on the sand. The middle ground shows the ocean with gentle waves. In the background, several large, dark sea stacks or rock formations rise from the water under a heavy, overcast sky. The overall tone is somber and contemplative.

**“CREATIVITY
REQUIRES THE
COURAGE TO
LET GO OF
CERTAINTIES.”**

ERICH FROMM
PSYCHOLOGIST

CUSHIONS

Sunbrella and Dolan fabrics

OASIQ cushions are covered with Sunbrella or Dolan fabrics. These fabrics have been especially developed for outdoor use and are made of solution dyed yarns. This unique colouring process guarantees optimal UV-resistance and durability. Most of the covers can be removed for cleaning. In case the cover can not be removed the cushion can be washed completely. The fabrics have also been treated with a water repellent Teflon layer.



CUSHIONS

190/191



Weatherproof cushions

The foam cores of these cushions are made of a special weatherproof foam called QuickDry Foam. This is a cutting edge, high performance foam designed specifically for outdoor cushions. Manufactured from carefully selected high grade material, QuikDry has extreme durability and strength. Its unique porous open cell structure allows water to drain very rapidly and fresh air to circulate freely.

The cushions for Maro and Yland LX are also weatherproof but do not have QuickDry foam. For these cushions we use regular high density foam over which we have a waterproof cover. On top of that comes the water repellent fabric cover which makes these cushions also weatherproof.



Non weatherproof cushions

For our regular cushions we use regular high density foam over which there is a fabric cover.

Washing

Most cushions have a zipper so that the cover can be removed and washed. In case the cushion has no zipper the complete cushion can be washed. For washing we recommend a woll washing program and a temperature of maximum 30 degrees.

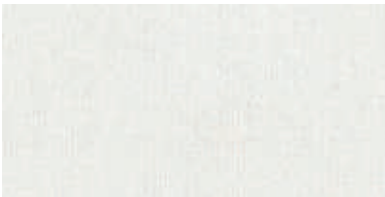
Dolan Vintage cushions

Our Vintage decoration pillows are made of Dolan yarn. This is an acrylic fiber which has been used for outdoor for more than 25 years. Dolan has aslo very good weatherproof resistance and very high colour fastness. This fabric has been used for many years for convertible car tops.



CUSHIONS

192/193



SUNBRELLA CANVAS NATURAL

CORAIL COCO SANDUR DIUNA
MARO YLAND



SUNBRELLA NATTE NATURE

RIAD



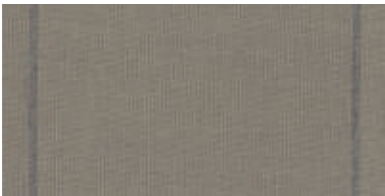
SUNBRELLA CAYENNE

SANDUR



SUNBRELLA PAPIKA

SANDUR



SUNBRELLA LANTERN SLATE

CORAIL SANDUR DIUNA YLAND



SUNBRELLA CHARCOAL CHINE

MARO COCO



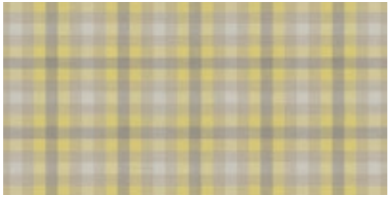
SUNBRELLA SOOTY

CORAIL SANDUR YLAND



SUNBRELLA NATURE GREY

CORAIL SANDUR DIUNA



SUNBRELLA MAC LEMON

COCO



SUNBRELLA CONFETTI GREEN

COCO



DOLAN VINTAGE HEART

DECORATION PILLOWS



DOLAN VINTAGE DIAMOND BLACK

DECORATION PILLOWS



DOLAN VINTAGE DIAMOND BLUE

DECORATION PILLOWS



DOLAN ORANGE

DECORATION PILLOWS



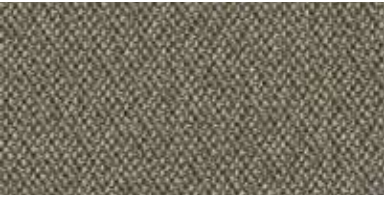
DOLAN OLIVE GREEN

DECORATION PILLOWS



DOLAN NAVY BLUE

DECORATION PILLOWS



DOLAN PANAMONE GREEN

RIAD

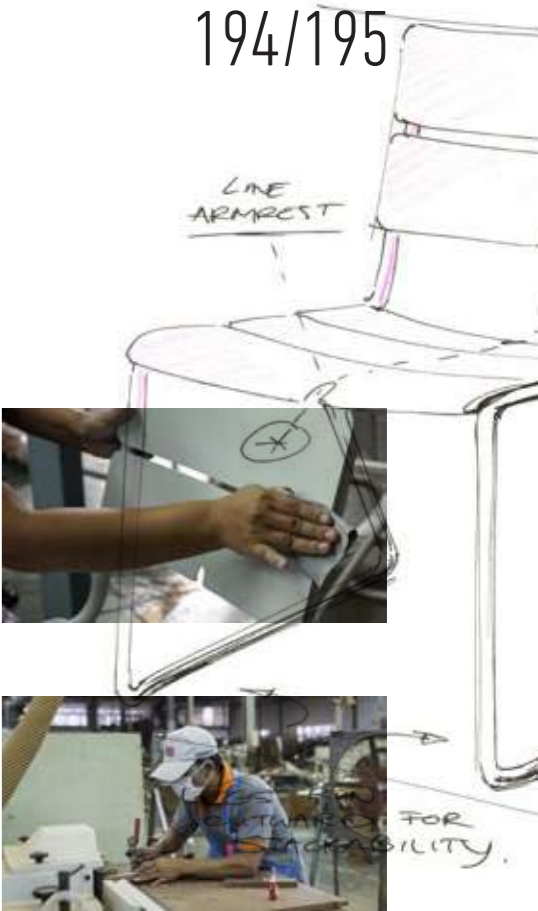


Craftsmanship

OASIQ FINDS INSPIRATION IN NATURE TO CRAFT OUTDOOR FURNITURE FOR PEOPLE. BEHIND THE SCENES ARE THE PEOPLE WHOSE SKILLS AND DEDICATION HELP TO ACHIEVE OUR VISION AT FACTORY LEVEL. THEY FORM THE BACKBONE OF OUR COMPANY.

BEHIND THE SCENES

194/195



OASIQ relies on the skills of people who pay meticulous attention to detail to create the top-quality furniture discerning customers expect. Our outdoor furniture is manufactured at a factory where every aspect of production is handled by specialists in their field of expertise. The cutting of the steel and aluminium parts, the moulding and joining of the teak components, the hand polishing and powder coating - every step is carried out in-house.



Quality control requires people with a thorough knowledge of every aspect of the production process. Inspecting the raw metals and teak to ensure they fulfil specifications. Checking the sanding, welding, painting and assembly. Personal attention is given to every piece of furniture before final approval.

Our factory is located in Thailand and has been specialised in the manufacturing of products for outdoor use since 2001. Traditional working methods that rely on craftsmanship, such as hand weaving, are used side by side with state-of-the-art modern technology to produce outdoor furniture that is both sturdy and perfectly finished.



As every true craftsman knows, there is more to achieving excellence than expertise and quality control alone. All depends on



people who love their work and give their best to the job in hand. Every one of our employees, no matter how small their role, is valued and rewarded for his or her dedication to performing an excellent job, day in day out.



MARK GABBERTAS

DESIGNER OF SANDUR, MACHAR, COCO AND SERAC

Mark Gabbertas is a multiple award-winning designer who has pioneered many new forms and processes in furniture design. He was at the forefront of the renaissance in the British designer/maker movement in the 1990s before establishing the Gabbertas Studio in 2001. The design studio currently leads the way in experimenting with new technologies and has earned accolades for pushing the boundaries of outdoor furniture design.

“Our objective is to create designs that have character through their simplicity.”



HANS DAALDER

DESIGNER OF CORAIL, MUZE AND DIUNA

Hans Daalder's work features a clean-design aesthetic that masterfully balances the adventurous with the functional. He has honed his skills designing for renowned furniture brands since his graduation from the Design Academy in Eindhoven (1989). His uncompromising focus on the quality of his creations has earned them a special place in clients' hearts.

“Finding the right balance of design features, colour, and texture is a process that involves knowing when to stop.”



GIJS PAPAVOINE

DESIGNER OF MARO

Design virtuoso Gijs Papavoine excels at taking a simple idea to its logical conclusion. Strong graphic elements complemented by an inspired use of basic shapes characterize his work. His quest for the perfect mix of pure lines and functionality has made him a peerless designer of chairs in particular. This culminated in groundbreaking designs in which gracefully arched backs raised the bar in terms of seating comfort.

“My designs always stem from a powerful basic form and are characterized by simplicity.”



MENEGHELLO PAOLELLI ASSOCIATI

SANDRO MENEGHELLO AND MARCO PAOLELLI, DESIGNERS OF RIAD AND SKAGEN

Both graduated in 2004 at the Politecnico di Milano, under the guidance of Roberto Palomba and Paolo Rizzatto, after different international experiences - from Central Saint Martins in London and Norwegian University of Science&Technology in Trondheim, to Köln Kisd University and EDF R&B in Paris, they set their studio in Milan.

“Serious and elegant with a strong sense of design.”



HUGO DE RUITER

DESIGNER OF YLAND AND ATTOL

Hugo de Ruiter excels at stylish designs that intelligently bridge the gap between indoor and outdoor living. After studying at the Design Academy in Eindhoven (1986), he developed collections for a long string of prestigious furniture brands. His designs have won kudos from fellow designers and clients for their distinctive mixture of charm and functionality.

“Nothing lasts forever, but my designs do attempt to be your friends for life.”



STUDIO PARADE

PAULIEN BERENDSEN AND ERIC SLOOT, DESIGNERS OF THE REEF

Studio Parade continues to captivate people who love coherent, simple and uncluttered design. This seasoned designer duo has been creating remarkable indoor and outdoor design furniture together since they graduated from the Design Academy in Eindhoven (1991). And there is more in store.

“Indoors or outdoors, we don't make a distinction. We always aim to create a space people love to be in.”

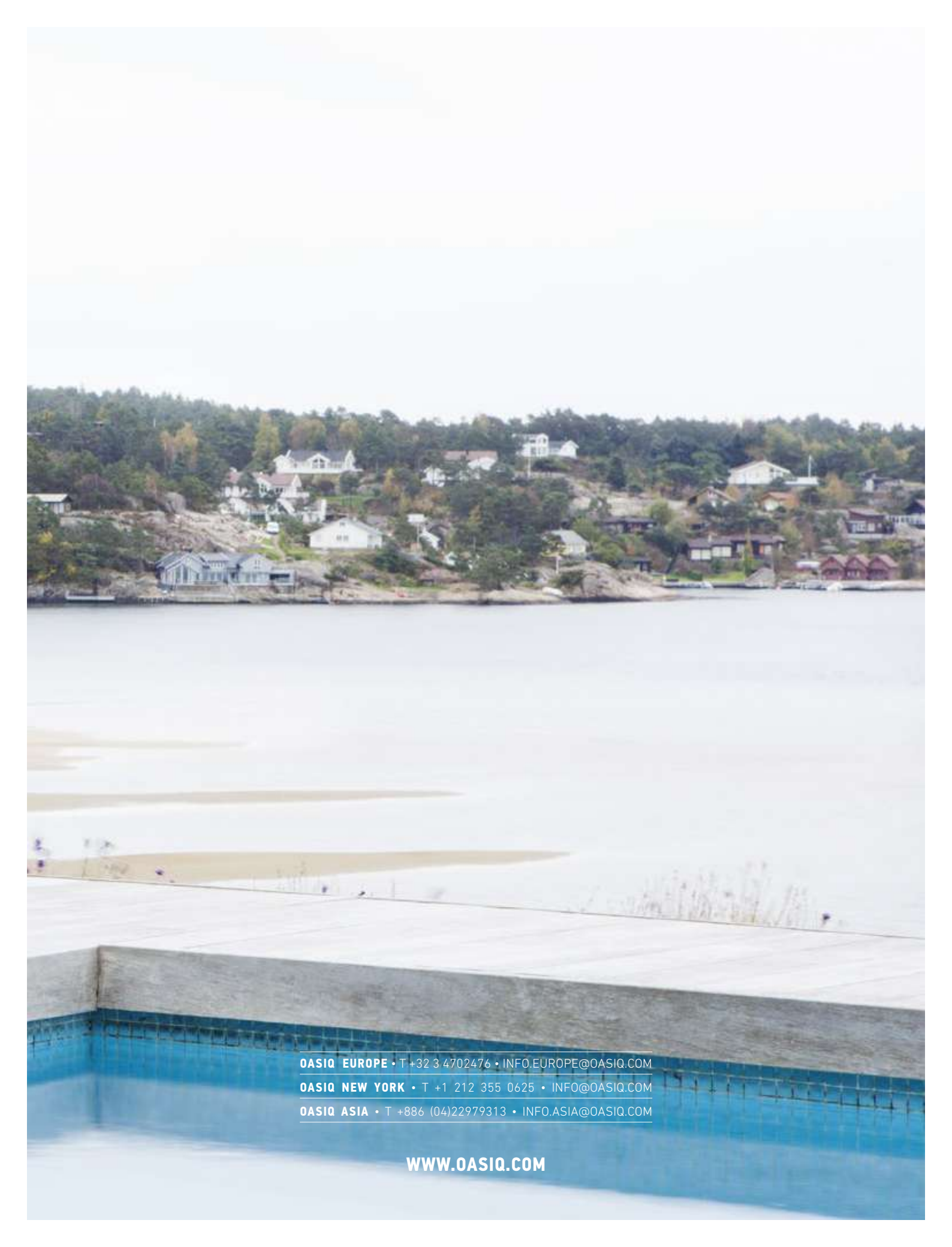


**“EVERYBODY HAS A
CREATIVE POTENTIAL
AND FROM THE MOMENT
YOU CAN EXPRESS THIS
CREATIVE POTENTIAL,
YOU CAN START
CHANGING THE WORLD.”**

PAULO COELHO
AUTHOR, LYRICIST, POET

Graphic design: www.oranjeboven.nl
Text: Angelique Cachia, Nina Schwarz
Photography: Inger Marie Grini, Owen Ragget

© Copyright OASIQ
All copyrights are owned by OASIQ bvba.
Registered designs applied for
infringements of our copyright by any
party will be vigorously pursued. OASIQ
reserves the right to alter or amend
descriptions and specifications given in
this publication in the light of technical
developments.



OASIQ EUROPE • T +32 3 4702476 • INFO.EUROPE@OASIQ.COM

OASIQ NEW YORK • T +1 212 355 0625 • INFO@OASIQ.COM

OASIQ ASIA • T +886 (04)22979313 • INFO.ASIA@OASIQ.COM

WWW.OASIQ.COM