

**THERE IS**



**ONLY ONE BEAN BAG**

XXXXXXXXXXXXXXXXXXXXXXXXXXXX

# ORIGINAL

XXXXXXXXXXXXXXXXXXXXXXXXXXXX



## AVAILABLE COLOURS

LIME GREEN 900.0007	TURQUOISE 900.0115	OLIVE GREEN 900.0122	BLUE 900.0004	SAND 900.0132	LIGHT PINK 900.0137	PETROL 900.0136	GRASS GREEN 900.0135	YELLOW 900.0134	ICE BLUE 900.0133
BLACK 900.0001	RED 900.0002	WHITE 900.0113	TAUPE 900.0124	SILVER 900.0003	BROWN 900.0006	DARK GREY 900.0005	DARK PURPLE 900.0123	PINK 900.0111	ORANGE 900.0008

## ORIGINAL FACTS

180 x 140 CM



Material  
**NYLON**

Filling  
**EPS**

Coating  
**WATER- AND DIRT  
REPELLENT**

Weight product  
**6.8 KG**

Litres  
**360 L**

Dimensions product (LxW)  
**180 x 140 CM**

Dimensions packaging (LxWxH)  
**60 x 60 x 110 CM**

Weight product+packaging  
**10 KG**

User recommendations  
**Intensive use may cause the filling to  
shrink after a time**

**With the refill you can completely fill  
your bag from scratch (350 litre) or  
refill your bag (100 litre)**

Washing Instructions  
**Lukewarm water & neutral soap**

Batchnumber  
**In the bag, close to the zipper on a  
white label**

- Features
- The one & only Original
  - Countless ways to sit, hang, laze and lounge
  - High-quality nylon fabric and filling for long-lasting use
  - Indoor use only



XXXXXXXXXXXXXXXXXXXXXXXXXXXX

# ORIGINAL STONEWASHED

XXXXXXXXXXXXXXXXXXXXXXXXXXXX



## AVAILABLE COLOURS



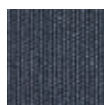
BLACK  
900.0270.1



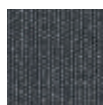
RED  
900.0270.2



SILVER GREY  
900.0270.3



BLUE  
900.0270.4



GREY  
900.0270.5



BROWN  
900.0270.6



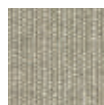
LIME GREEN  
900.0270.7



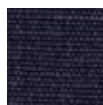
ORANGE  
900.0270.8



TAUPE  
900.0270.9



SAND  
900.0270.10



DARK BLUE  
900.0270.11

## ORIGINAL STONEWASHED FACTS

180 x 140 CM



Material  
**100% COTTON**

Filling  
**EPS**

Coating  
**WATER- AND DIRT REPELLENT**

Weight product  
**6.8 KG**

Litres  
**360 L**

Dimensions product (LxW)  
**180 x 140 CM**

Dimensions packaging (LxWxH)  
**60 x 60 x 110 CM**

Weight product+packaging  
**10 KG**

Washing Instructions

- Use a wet cloth to gently cleanse the area by patting it
- Machine washable cover
- Wash outerbag at max 30° (non chlorine bleach). Wash inside out



User recommendations

*Intensive use may cause the filling to shrink after a time*

*With the refill you can completely fill your bag from scratch (350 litre) or refill your bag (100 litre)*

Batchnumber

*In the bag, close to the zipper on a white label*

Features

- The one & only Original
- Countless ways to sit, hang, laze and lounge
- 100% luxury cotton
- High-quality filling for long-lasting use
- Machine-washable cover

\*\*\*\*\*  
**ORIGINAL METAHLOWSKI**  
 \*\*\*\*\*



**AVAILABLE COLOURS**



BRONZO  
900.0127



SILVI  
900.0126



TITANO  
900.0128



GOLDI  
900.0125

**ORIGINAL  
METAHLOWSKI FACTS**  
180 x 140 CM



Material  
**POLYESTER & COTTON**

Filling  
**EPS**

Coating  
**WATER- AND DIRT  
REPELLENT**

Weight product  
**6.8 KG**

Litres  
**360 L**

Dimensions product (LxW)  
**180 x 140 CM**

Dimensions packaging (LxWxH)  
**60 x 60 x 110 CM**

Weight product+packaging  
**10 KG**

User recommendations  
*Intensive use may cause the filling to shrink after a time*

*With the refill you can completely fill your bag from scratch (350 litre) or refill your bag (100 litre)*

Washing Instructions  
**Lukewarm water & neutral soap**

Batchnumber  
*In the bag, close to the zipper on a white label*

Features  
 • The one & only Original  
 • Countless ways to sit, hang, laze and lounge  
 • High-quality fabric and filling for long-lasting use

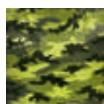
XXXXXXXXXXXXXXXXXXXXXXXXXXXX

# ORIGINAL CAMOUFLAGE

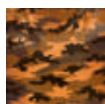
XXXXXXXXXXXXXXXXXXXXXXXXXXXX



## AVAILABLE COLOURS



CAMOUFLAGE  
GREEN  
900.0138



CAMOUFLAGE  
ORANGE  
900.0139

## ORIGINAL CAMOUFLAGE FACTS

180 x 140 CM



Material  
**POLYESTER**

Filling  
**EPS**

Coating  
**WATER- AND DIRT  
REPELLENT**

Weight product  
**6.8 KG**

Litres  
**360 L**

Dimensions product (LxW)  
**180 x 140 CM**

Dimensions packaging (LxWxH)  
**60 x 60 x 110 CM**

Weight product+packaging  
**10 KG**

User recommendations  
*Intensive use may cause the filling to shrink after a time*

*With the refill you can completely fill your bag from scratch (350 litre) or refill your bag (100 litre)*

Washing Instructions  
*Lukewarm water & neutral soap*

Batchnumber  
*In the bag, close to the zipper on a white label*

- Features
- The one & only Original in a specially designed pattern
  - Countless ways to sit, hang, laze and lounge
  - High-quality filling for long-lasting use
  - Indoor use only



INDOOR



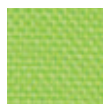
XXXXXXXXXXXXXXXXXXXXXXXXXXXX

# ORIGINAL OUTDOOR

XXXXXXXXXXXXXXXXXXXXXXXXXXXX



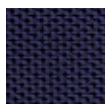
## AVAILABLE COLOURS



CYTRUS  
900.0241



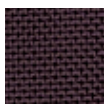
TAUPE  
900.0243



NAVY BLUE  
900.0244



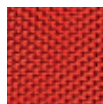
CHARCOAL  
900.0246



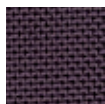
PLUM  
900.0254



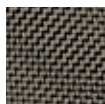
SAND  
900.0255



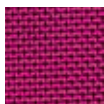
RED  
900.0257



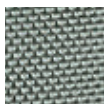
AUBERGINE  
900.0258



GREY OLIVE  
900.0259

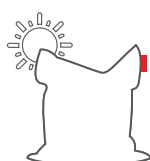


PINK  
900.0262



MINERAL BLUE  
900.0263

## ORIGINAL OUTDOOR FACTS 180 x 140 CM



Material  
**SUNBRELLA FABRIC  
UV RESISTANT**

Filling  
**EPS**

Coating  
**WATER- AND DIRT  
REPELLENT**

Weight product  
**6.8 KG**

Litres  
**360 L**

Dimensions product (LxW)  
**180 x 140 CM**

Dimensions packaging (LxWxH)  
**60 x 60 x 110 CM**

Weight product+packaging  
**10 KG**

User recommendations

- Intensive use may cause the filling to shrink after a time
- With the refill you can completely fill your bag from scratch (350 litre) or refill your bag (100 litre)
- Iron your Original on a regular basis to maintain its water-repellence
- When not in use, store inside

Washing Instructions

- Wipe clean with a moist cloth or water and soap

- Wash outerbag at 40C
- Wash inside out



Batchnumber

In the bag, close to the velcro on a white label

Features

- The one & only Original for outdoor use!
- Countless ways to sit, hang, laze and lounge
- For in- and outdoor use
- Water repellent Sunbrella fabric with excellent colour fastness (100% solution dyed acrylic)
- Machine washable cover



INDOOR



OUTDOOR

XXXXXXXXXXXXXXXXXXXXXXXXXXXX

# JUNIOR

XXXXXXXXXXXXXXXXXXXXXXXXXXXX

**fatboy®**



## AVAILABLE COLOURS

									
LIME GREEN 900.0503	TURQUOISE 900.0505	OLIVE GREEN 900.0513	BLUE 900.0509	SAND 900.0516	LIGHT PINK 900.0521	PETROL 900.0520	GRASS GREEN 900.0519	YELLOW 900.0518	ICE BLUE 900.0517
									
BLACK 900.0501	RED 900.0500	WHITE 900.0506	TAUPE 900.0515	SILVER 900.0508	BROWN 900.0507	DARK GREY 900.0510	DARK PURPLE 900.0510	PINK 900.0504	ORANGE 900.0502

## JUNIOR FACTS

130 x 100 CM



Material  
**NYLON**

Filling  
**EPS**

Coating  
**WATER- AND DIRT  
REPELLENT**

Weight product  
**3 KG**

Litres  
**140 L**

Dimensions product (LxW)  
**130 x 100 CM**

Dimensions packaging (LxWxH)  
**60 x 60 x 72 CM**

Weight product+packaging  
**5 KG**

User recommendations  
*Intensive use may cause the filling to shrink after a time*

*With the refill you can completely fill your bag from scratch (140 litre) or refill your bag (100 litre)*

Washing Instructions  
**Lukewarm water & neutral soap**

Batchnumber

*In the bag, close to the zipper on a white label*

Features

- The one & only Original
- Countless ways to sit, hang, laze and lounge
- Unique size designed with children and teenagers in mind
- High-quality fabric and filling for long-lasting use



\*\*\*\*\*

# JUNIOR STONEWASHED

\*\*\*\*\*

**fatboy®**



## AVAILABLE COLOURS



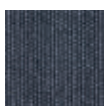
BLACK  
900.0290.1



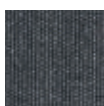
RED  
900.0290.2



SILVER GREY  
900.0290.3



BLUE  
900.0290.4



GREY  
900.0290.5



BROWN  
900.0290.6



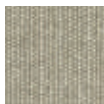
LIME GREEN  
900.0290.7



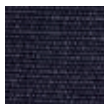
ORANGE  
900.0290.8



TAUPE  
900.0290.9



SAND  
900.0290.10



DARK BLUE  
900.0290.11

## JUNIOR FACTS

130 x 100 CM



Material  
**100% COTTON**

Filling  
**EPS**

Coating  
**WATER- AND DIRT  
REPELLENT**

Weight product  
**3 KG**

Litres  
**140 L**

Dimensions product (LxW)  
**130 x 100 CM**

Dimensions packaging (LxWxH)  
**60 x 60 x 72 CM**

Weight product+packaging  
**5 KG**

User recommendations  
*Intensive use may cause the filling to shrink after a time*

*With the refill you can completely fill your bag from scratch (140 litre) or refill your bag (100 litre)*

Batchnumber  
*In the bag, close to the zipper on a white label*

### Washing Instructions

- Machine washable cover
- Use a wet cloth to gently cleanse the area by patting it
- Wash outerbag at max 30° (non chlorine bleach). Wash inside out



### Features

- The one & only Original
- Countless ways to sit, hang, laze and lounge
- Unique size designed with children and teenagers in mind
- High-quality fabric and filling for long-lasting use





# BUGGLE-UP

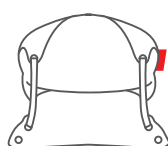


## AVAILABLE COLOURS

							
JEANS LIGHT BLUE 900.0627	YELLOW OCHRE 900.0625	PURPLE 900.0626	BLACK 900.0610	RED 900.0611	WHITE 900.0614	LIGHT GREY 900.0620	TAUPE 900.0616
							
LIME GREEN 900.0613	ORANGE 900.0612	PINK 900.0622	TURQUOISE 900.0615	SAND 900.0617	PETROL 900.0623	DARK BLUE 900.0621	BROWN 900.0618

## BUGGLE-UP FACTS

190 x 140 CM



Material  
**POLYESTER**

Filling  
**EPS**

Coating  
**WATER- AND DIRT REPELLENT**

Weight product  
**8.8 KG**

Litres  
**360 L**

Dimensions product (LxW)  
**190 x 140 CM**

Dimensions packaging (LxWxH)  
**60 x 60 x 110 CM**

Weight product+packaging  
**12 KG**

User recommendations

- Treat the Buggle-up like a regular garden cushion and store it indoors when it rains
- Intensive use may cause the filling to shrink after a time

With the refill you can completely fill your bag from scratch (350 litre EPS) or refill your bag (100 litre EPS)

Washing Instructions  
Lukewarm water & soap

Batchnumber  
In the bag, close to the zipper on a white label

Features

- Suitable for in- and outdoor use
- Water- and dirt-repellent fabric
- Effortless adjustment from single to double lounge seating



INDOOR



OUTDOOR

# TSJONGE-JONGE



## AVAILABLE COLOURS



TSJONGE  
LIGHT GREY  
900.0900



TSJONGE  
DARK GREY  
900.0901



TSJONGE  
ORANGE  
900.0902



TSJONGE  
GREEN  
900.0903



JONGE  
LIGHT GREY  
902.0900



JONGE  
DARK GREY  
902.0901



JONGE  
ORANGE  
902.0902



JONGE  
GREEN  
902.0903



BACKREST  
LIGHT GREY,  
901.0901



BACKREST  
DARK GREY  
901.0905



BACKREST  
CIRCLES WHITE  
901.0902



BACKREST  
CIRCLES YELLOW  
901.0903



BACKREST  
CIRCLES ORANGE  
901.0906



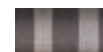
BACKREST  
CIRCLES GREEN  
901.0907



BACKREST  
CITRUS WEAVE  
901.0904



BACKREST  
ORANGE WEAVE  
901.0908



BACKREST  
STRIPES  
901.0909

## TSJONGE-JONGE FACTS

### BACKREST

32 CM Ø x 87 CM

### TSJONGE

90 x 100 x 40 CM

### JONGE

90 x 65 x 40 CM

### Material

**HIGH-END FABRICS  
(SUNBRELLA & DE PLOEG)  
PVC BOTTOM  
NYLON RIPSTOP COVER**

### Stuffing

**EPS  
FOAM**

### Weight product

Tsjonge: **11 KG**  
Jonge: **6 KG**

### Dimensions product (LxWxH)

Tsjonge: **90 x 100 x 40 CM**  
Jonge: **90 x 65 x 40 CM**  
Backrest: **32 CM Ø x 87 CM**

### Dimensions packaging (LxWxH)

Tsjonge: **79.5 x 59.5 x 121 CM**  
Jonge: **60 x 60 x 110 CM**  
Backrest: **60 x 60 x 72 CM**

### Weight product+packaging

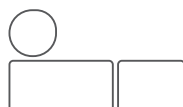
Tsjonge: **8.5 KG**  
Jonge: **6 KG**  
Backrest: **4 KG**

### User recommendations

**When not in use, store inside**

### Features

- Optimal seating comfort
- Suitable for in- and outdoor use
- High-end in- and outdoor fabrics
- Handy cover to protect T-J outdoors against UV and rain
- Anti slip bottom



INDOOR



OUTDOOR

XXXXXXXXXXXXXXXXXXXXXXXXXXXX

# POINT

XXXXXXXXXXXXXXXXXXXXXXXXXXXX

**fatboy®**



## AVAILABLE COLOURS



BLACK  
900.0031



RED  
900.0032



SILVER  
900.0033



BLUE  
900.0034



DARK GREY  
900.0035



BROWN  
900.0036



LIME GREEN  
900.0037



ORANGE  
900.0038



PINK  
900.0141



DARK PURPLE  
900.0148



WHITE  
900.0143



TURQUOISE  
900.0145



OLIVE GREEN  
900.0147



TAUPE  
900.0149



SAND  
900.0152



ICE BLUE  
900.0153



YELLOW  
900.0154



GRASS GREEN  
900.0155



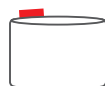
PETROL  
900.0156



LIGHT PINK  
900.0157

## POINT FACTS

35 x 50 CM



Material  
**NYLON**

Filling  
**EPS**

Coating  
**WATER- AND DIRT  
REPELLENT**

Weight product  
**1.55 KG**

Litres  
**100 L**

Dimensions product (LxW)  
**35 x 50 CM**

Dimensions packaging (LxWxH)  
**47 x 47 x 52 CM**

Weight product+packaging  
**3 KG**

User recommendations

- Intensive use may cause the filling to shrink after a time
- With the refill you can completely fill your Point from scratch (100 litre)

Washing Instructions  
**Lukewarm water & neutral soap**

Batchnumber  
**In the bag, close to the zipper on a white label**

Features

- An ideal addition to any living space
- High-grade material and special filling guarantee extra comfort
- Available in a big range of colours



INDOOR

\*\*\*\*\*  
**POINT STONEWASHED**  
 \*\*\*\*\*



**AVAILABLE COLOURS**



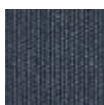
BLACK  
900.0170.1



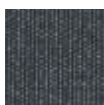
RED  
900.0170.2



SILVER GREY  
900.0170.3



BLUE  
900.0170.4



GREY  
900.0170.5



BROWN  
900.0170.6



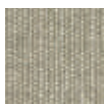
LIME GREEN  
900.0170.7



ORANGE  
900.0170.8



TAUPE  
900.0170.9

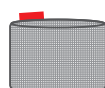


SAND  
900.0170.10



DARK BLUE  
900.0170.11

**POINT STONEWASHED  
FACTS**  
35 x 50 CM



Material  
**100% COTTON**

Filling  
**EPS**

Coating  
**WATER- AND DIRT  
REPELLENT**

Weight product  
**1.55 KG**

Litres  
**100 L**

Dimensions product (LxW)  
**35 x 50 CM Ø**

Dimensions packaging (LxWxH)  
**47 x 47 x 52 CM**

Weight product+packaging  
**3 KG**

User recommendations  
 • Intensive use may cause the filling to shrink after a time  
 • With the refill you can completely fill your Point from scratch (100 litre)

Washing Instructions  
 Use a wet cloth to gently cleanse the area by patting it

Batchnumber  
 In the bag, close to the zipper on a white label

Features  
 • An ideal addition to any living space  
 • High-grade material and special filling guarantee extra comfort  
 • Available in a big range of colours  
 • 100% luxury cotton



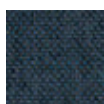
XXXXXXXXXXXXXXXXXXXXXXXXXXXX

# AVENUE

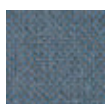
XXXXXXXXXXXXXXXXXXXXXXXXXXXX



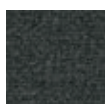
## AVAILABLE COLOURS



BLUE  
900.0730



STEEL BLUE  
900.0731



ANTHRACITE  
900.0732



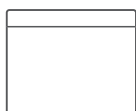
GREY  
900.0733



LIGHT GREY  
900.0734

## AVENUE FACTS

60 x 60 x 47 CM



### Material

**EPS CORE WITH COMFY  
FOAM TOP, SUNBRELLA  
FABRICS**

### Weight product

**4 KG**

### Dimensions product

**60 x 60 x 49 CM**

### Dimensions packaging (LxWxH)

**60 x 60 x 72 CM**

### Weight product+packaging

**6 KG**

### Washing Instructions

- Wipe clean with a moist cloth or water and soap
- Wash outerbag at 40C
- Wash inside out



### Batchnumber

**In the cover on a white label**

### Features

- Luxurious seating comfort
- Modular system (make as big as you want!)
- Washable cover
- Super strong core
- Suitable for in- and outdoor use

### User recommendations

- Treat the Avenue like a regular garden cushion and store it indoors when it rains
- Iron your Avenue on a regular basis to maintain its water-repellence.



INDOOR



OUTDOOR



XXXXXXXXXXXXXXXXXXXXXXXXXXXX

# BABOESJKA

XXXXXXXXXXXXXXXXXXXXXXXXXXXX

**fatboy®**



## AVAILABLE COLOURS



PESSOA AZUL  
900.6313



AMALIA AZUL  
900.6314



EUSEBIO CINZA  
900.6315



AMALIA CINZA  
900.6316



LISBOA  
AMARELO  
900.6317



EUSEBIO  
AMARELO  
900.6318



PESSOA CINZA  
900.6319



AMALIA ROSA  
900.6320



LISBOA ROSA  
900.6321



PESSOA ROSA  
900.6322



ALI BABA BLUE  
900.6323



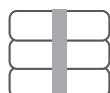
ALI BABA RED  
900.6325



ALI BABA TAUPE  
900.6326

## BABOESJKA FACTS

47 x 47 x 52 CM



Material pillow  
**POLYESTER**  
Material belt  
**LEATHER**

Stuffing  
**PSG FOAM**

Weight product  
**5 KG**

Dimensions product (LxWxH)  
**47 x 47 x 52 CM**

Dimensions packaging (LxWxH)  
**47 x 47 x 52 CM**

Weight product+packaging  
**5.5 KG**

Washing Instructions  
Use a wet cloth to gently cleanse  
the area by patting it

Batchnumber  
In pillow, close to the zipper

Features  
• Available in many expressive  
patterns  
• Ideal 'extra' seat  
• Beautiful detailing and 100%  
leather belt



INDOOR

# CONCRETE SEAT



## AVAILABLE COLOURS



CONCRETE SEAT  
WHITE  
**900.6700**



CONCRETE SEAT  
LIGHT GREY  
**900.6701**



CONCRETE SEAT  
GREY  
**900.6702**



CONCRETE SEAT  
TAUPE  
**900.6703**



CONCRETE SEAT  
BROWN  
**900.6704**



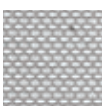
CONCRETE SEAT  
ANTHRACITE  
**900.6705**



CONCRETE SEAT  
LIGHT GREEN  
**900.6706**



PILLOW  
MOSAIC  
BROWN  
**900.6800**



PILLOW  
CROSSHATCH  
GREY  
**900.6801**



PILLOW  
MANDARIN  
ORANGE  
**900.6802**



PILLOW  
BLUEBERRY  
BLUE  
**900.6803**



PILLOW  
GRAPHITE  
GREY  
**900.6804**



PILLOW  
SILVER DUST  
**900.6805**



PILLOW PINK  
**900.6806**



PILLOW BLACK  
**900.6807**



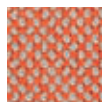
PILLOW BLUE  
**900.6808**



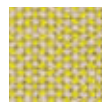
PILLOW GREEN  
**900.6809**



PILLOW PURPLE  
**900.6810**



PILLOW DELUXE  
ORANGE  
WEAVE  
**900.6850**



PILLOW DELUXE  
CITRUS  
WEAVE  
**900.6851**

## CONCRETE SEAT FACTS

**40 x 50 x 43 CM**



Material  
**PE**

Weight product  
Concrete Seat: **5.4 KG**  
Pillow: **0.55 KG**

Dimensions product (LxWxH)  
Concrete Seat: **40 x 50 x 43 CM**  
Pillow: **40 x 50 x 3 CM**

Dimensions packaging (LxWxH)  
Concrete Seat: **47.5 x 47.5 x 53 CM**  
Pillow: **47 x 47 x 1.8 CM**

Weight product+packaging  
**7 KG**

User recommendations  
**Treat your pillow like a regular garden cushion and store it indoors when it rains**

Washing Instructions  
**Easy cleaning with lukewarm water and neutral soap**

### Features

- The pillow is available in 13 colours and prints
- Stylish and iconic shaped stool (or table)
- Connect multiple Concrete Seats to create a bench
- Mix and match with a large variety of colors and patterns
- Can be used in- and outdoors



INDOOR



OUTDOOR

XXXXXXXXXXXXXXXXXXXXXXXXXXXX

# ATTACKLE!

XXXXXXXXXXXXXXXXXXXXXXXXXXXX



## AVAILABLE COLOURS



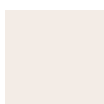
**ANTHRACITE**  
**900.6750**



**GREY**  
**900.6751**



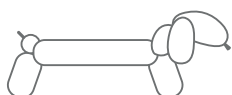
**LIGHT GREY**  
**900.6752**



**WHITE**  
**900.6753**

## ATTACKLE FACTS

**190 x 77.5 x 55 CM**  
**SEATING HEIGHT**  
**49.3 CM**



*Material*  
**PE**

*Weight product*  
**18.5 KG**

*Dimensions product*  
**195 x 77.5 x 55 CM**  
**49.3 CM** (seating height)

*Dimensions packaging (LxWxH)*  
**60 x 60 x 110 CM**

*Weight product+packaging*  
**19.5 KG**

*Washing instructions*  
**Easy cleaning with lukewarm water and neutral soap**

*Features*  
• **Super strong rotation moulded bench**  
• **Seats 2 adults**  
• **Easy to assemble**  
• **Suitable for in- and outdoor use**  
• **Comes in 7 parts**



INDOOR



OUTDOOR

# CH-AIR



## AVAILABLE COLOURS



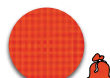
CH-AIR  
WHITE  
900.3200



CH-AIR  
SILVER  
900.3201



CH-AIR  
ANTHRACITE  
900.3202



PILLOW  
ORANGE  
900.3111



PILLOW  
GREEN  
900.3112



PILLOW  
BLACK  
900.3113



PILLOW  
PINK  
900.3114



PILLOW  
GREY  
900.3115



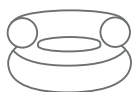
PILLOW  
BLUE  
900.3116



PILLOW  
YELLOW  
900.3117

## CH-AIR FACTS

135 x 70 CM



### Material

Ch-air: **PVC**

Pillow: **HIGH-END FABRICS (SUNBRELLA)**

Stuffing Pillow  
**2 CM FOAM**

Coating Pillow  
**WATER- AND DIRT REPELLENT**

Weight product  
Ch-air: **6.5 KG**

Dimensions product (WxH)  
Ch-air: **135 x 70 CM**  
Pillow: **80 CM Ø**

### Dimensions packaging (LxWxH)

**37 x 17.5 x 80 CM**

Weight product+packaging  
Ch-air: **7.5 KG**

### User recommendations

- Treat your Ch-air like a regular garden cushion and store it indoors when it rains

### Washing Instructions

Clean carefully with soft cloth and lukewarm water (if necessary with neutral soap). Do not use any cleaning materials that contain chemicals

### Batchnumber

Ch-air: **Around valve location**

Pillow: **In the cover on a white label**

### Features

- The pillow is available in 7 stylish colours combined with the anchor bag
- A stylish and fun inflatable seat
- Accessories; pillow, anchor bag and carrier bag
- It's like sitting on air



INDOOR



OUTDOOR

XXXXXXXXXXXXXXXXXXXXXXXXXXXX

# CO<sub>9</sub> MINI

XXXXXXXXXXXXXXXXXXXXXXXXXXXX

fatboy®



## AVAILABLE COLOURS



BROWN  
900.6602.6



LIME GREEN  
900.6602.7



ORANGE  
900.6602.8

## CO<sub>9</sub> MINI FACTS

30 x 27 x 10 CM



Material  
**100% COTTON**

Stuffing  
**DACRON FOAM**

Coating  
**WATER- AND DIRT  
REPELLENT**

Weight product  
**0.22 KG**

Dimensions product (LxW)  
**30 x 27 x 10 CM**

Dimensions packaging (LxWxH)  
**30 x 30 x 10 CM**

Weight product+packaging  
**0.53 KG**

Washing Instructions  
**Use a wet cloth to gently cleanse  
the area by patting it**

Batchnumber  
**At the back of the right paw**

Features  
• **Sturdy and indestructible, but also  
soft and cuddly**  
• **High-quality materials and filling**

Designer: Florentijn Hofman



INDOOR



XXXXXXXXXXXXXXXXXXXXXXXXXXXX

# CO<sub>9</sub> XS

XXXXXXXXXXXXXXXXXXXXXXXXXXXX

fatboy®



## AVAILABLE COLOURS



GREY  
900.6600.5



BROWN  
900.6600.6



LIME GREEN  
900.6600.7



ORANGE  
900.6600.8

## CO<sub>9</sub> XS FACTS

180 x 150 CM



Material  
**100% COTTON**

Filling  
**EPS**

Coating  
**WATER- AND DIRT  
REPELLENT**

Weight product  
**9 KG**

Dimensions product (LxW)  
**180 x 150 CM**

Dimensions packaging (LxWxH)  
**60 x 60 x 110 CM**

Weight product+packaging  
**10.2 KG**

User recommendations  
*Intensive use may cause the filling to shrink after some time*

Washing Instructions  
*Use a wet cloth to gently cleanse the area by patting it*

Batchnumber  
*In bag, close to zipper behind ears*

- Features
- Unique statement piece
  - Oversized bunny for lounging and playing
  - High-quality materials and filling

Designer: Florentijn Hofman



# CO<sub>9</sub> XXL



## AVAILABLE COLOURS



BROWN  
900.6601.6

## CO<sub>9</sub> XXL FACTS

500 x 300 CM



Material  
**100% COTTON**

Filling  
**EPS**

Coating  
**WATER- AND DIRT  
REPELLENT**

Weight product  
**150 KG**

Dimensions product (LxWxH)  
**500 x 300 x 130 CM**

Dimensions packaging (LxWxH)  
**120 x 120 x 150 CM (2X BLOCK PALLET)**  
**80 x 120 x 80 CM (4X CARTONS)**

Weight product+packaging  
**200 KG**

User recommendations  
*Intensive use may cause the filling to shrink after some time*

Washing Instructions  
*Use a wet cloth to gently cleanse the area by patting it*

Batchnumber  
*In bag, close to zipper behind ears*

Features

- Unique statement piece
- Oversized bunny for lounging and playing
- High-quality materials and filling

Designer: Florentijn Hofman

# DOGGIELOUNGE SMALL & LARGE



## AVAILABLE COLOURS



**BLACK**  
SMALL: 900.0051  
LARGE: 900.0061



**RED**  
SMALL: 900.0052  
LARGE: 900.0062



**BLUE**  
SMALL: 900.0051.1  
LARGE: 900.0061.1



**DARK GREY**  
SMALL: 900.0059  
LARGE: 900.0069



**BROWN**  
SMALL: 900.0057  
LARGE: 900.0067



**TURQUOISE**  
SMALL: 900.0051.2  
LARGE: 900.0061.2



**SAND**  
SMALL: 900.0056



**OLIVE GREEN**  
SMALL: 900.0051.3  
LARGE: 900.0061.3



**PINK**  
SMALL: 900.0053



**LIME GREEN**  
SMALL: 900.0054



**ORANGE**  
SMALL: 900.0055

### DOGGIELOUNGE SMALL FACTS

60 x 80 CM

### DOGGIELOUNGE LARGE FACTS

120 x 80 CM

Material  
**NYLON**

Filling  
**EPS**

Coating  
**WATER- AND DIRT  
REPELLENT**

Weight product  
Small: **2.33 KG**  
Large: **4.82 KG**

Litres  
Small: **100 L**  
Large: **200 L**

Dimensions product (LxWxH)  
Small: **60 x 80 x 15 CM**  
Large: **120 x 80 x 15 CM**

Dimensions packaging (LxWxH)  
Small: **47 x 47 x 52 CM**  
Large: **60 x 60 x 72 CM**

Weight product+packaging  
Small: **4 KG**  
Large: **7 KG**

User recommendations  
• Intensive use may cause the filling to shrink after a time

With the refill you can completely fill your bag from scratch (small: 100 litre EPS, large: 200 litre EPS) or refill your bag (100 litre EPS)

Washing Instructions  
Lukewarm water & soap

Batchnumber  
In the bag, close to the zipper on a white label

Features  
• Made from sturdy, durable material  
• Top-quality filling for even more comfort



# DOGGIELOUNGE STONEWASHED SMALL & LARGE

+NAMETAG



## AVAILABLE COLOURS

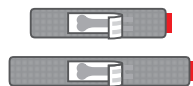
BLACK	RED	BLUE	GREY	BROWN	LIME GREEN	ORANGE	TAUPE	SAND	DARK BLUE
SMALL: 900.0250.1 LARGE: 900.0260.1	SMALL: 900.0250.2 LARGE: 900.0260.2	SMALL: 900.0250.4 LARGE: 900.0260.4	SMALL: 900.0250.5 LARGE: 900.0260.5	SMALL: 900.0250.6 LARGE: 900.0260.6	SMALL: 900.0250.7 LARGE: 900.0260.7	SMALL: 900.0250.8 LARGE: 900.0260.8	SMALL: 900.0250.9 LARGE: 900.0260.9	SMALL: 900.0250.10 LARGE: 900.0260.10	SMALL: 900.0250.11 LARGE: 900.0260.11

### DOGGIELOUNGE SMALL STONEWASHED FACTS

60 x 80 CM

### DOGGIELOUNGE LARGE STONEWASHED FACTS

120 x 80 CM



Material  
**100% COTTON**

Filling  
**EPS**

Coating  
**WATER- AND DIRT  
REPELLENT**

Weight product  
Small: **2.33 KG**  
Large: **4.82 KG**

Litres  
Small: **100 L**  
Large: **200 L**

Dimensions product (LxWxH)  
Small: **60 x 80 x 15 CM**  
Large: **120 x 80 x 15 CM**

Dimensions packaging (LxWxH)  
Small: **47 x 47 x 52 CM**  
Large: **60 x 60 x 72 CM**

Weight product+packaging  
Small: **4 KG**  
Large: **7 KG**

User recommendations  
• Intensive use may cause the filling to shrink after a time

With the refill you can completely fill your bag from scratch (small: 100 litre EPS, large: 200 litre EPS) or refill your bag (100 litre EPS)

Washing Instructions  
Wash outerbag at max 30°C (non chlorine bleach). Wash inside out



Batchnumber  
In the bag, close to the zipper on a white label

Features  
• Strong & durable fabric  
• Washable cover  
• High-quality filling for extra comfort



INDOOR

### DOGGIELOUNGE SMALL NAMETAG S FACTS

30 x 11 CM

### DOGGIELOUNGE LARGE NAMETAG L FACTS

40 x 11 CM



Material  
**100% COTTON**

Dimensions product (LxW)  
Small: **30 x 11 CM**  
Large: **40 x 11 CM**

Number of characters per nametag  
Small: **max. 9**  
Large: **max. 12**

Washing Instructions  
Wash nametag at 40°C



Do not put the nametag in the dryer

Features  
• Personalize your Doggielounge with your own nametag



INDOOR

\*\*\*\*\*

# REFILL

\*\*\*\*\*



## AVAILABLE COLOURS



WHITE 100 L  
900.9900



WHITE 350 L  
900.9901

## REFILL FACTS 100 L

Material  
**EPS**

Weight product  
**2.5 KG**

Litres  
**100 L**

Dimensions packaging (LxWxH)  
**47 x 47 x 52 CM**

Weight product+packaging  
**3 KG**

User recommendations  
• **Intensive use may cause the filling to shrink after a time**

## REFILL FACTS 350 L

Material  
**EPS**

Weight product  
**6.1 KG**

Litres  
**350 L**

Dimensions packaging (LxWxH)  
**60 x 60 x 110 CM**

Weight product+packaging  
**8 KG**

User recommendations  
• **Intensive use may cause the filling to shrink after a time**



INDOOR



OUTDOOR



# HEADDEMOCK



## AVAILABLE COLOURS



BLACK  
900.1010



RED  
900.1011



ORANGE  
900.1012



LIME GREEN  
900.1013



WHITE  
900.1015



TURQUOISE  
900.1016



TAUPE  
900.1017



BROWN  
900.1018



LIGHT GREY  
900.1110



DARK BLUE  
900.1111



PINK  
900.1112



PETROL  
900.1113



SAND  
900.1114



YELLOW OCHRE  
900.1115



PURPLE  
900.1116



JEANS LIGHT  
BLUE  
900.1117

## HEADDEMOCK FACTS HAMMOCK & FRAME 330 x 110 CM



Material  
Hammock: **POLYESTER**  
Frame: **METAL AND RUBBER**

Stuffing  
Hammock:  
**100% POLYESTER FIBERFILL**

Coating  
Hammock: **WATER- AND  
DIRT REPELLENT**  
Frame: **POWDER COATING**

Weight product  
Hammock: **14 KG**  
Frame: **14 KG**  
Hammock & Frame: **28 KG**

Dimensions product (LxWxH)  
Hammock & Frame:  
**330 x 127 x 110 CM**  
Hammock: **330 x 127 CM**

Dimensions packaging (LxWxH)  
Hammock & Frame:  
**80 x 30 x 120 CM**  
Hammock: **80 x 30 x 120 CM**  
Frame: **23 x 23 x 130 CM**

Weight product+packaging  
Hammock & Frame: **32 KG**  
Hammock: **16 KG**  
Frame: **16 KG**

User recommendations  
• **Treat your Headdemock like a regular garden cushion and store it indoors when it rains**  
• **Can hold up to 150 KG**

Washing Instructions  
**Lukewarm water & neutral soap**

Batchnumber  
Hammock:  
**In the bag on a white label**  
Frame:  
**In the bag on a white label**

Features  
• **Sturdy frame with extra-large hammock**  
• **Comes with 2 handy carrier bags**  
• **Durable and water-repellent fabric**

XXXXXXXXXXXXXXXXXXXXXXXXXXXX

# HEADDEMCK

PILLOW & COVER

XXXXXXXXXXXXXXXXXXXXXXXXXXXX



## AVAILABLE COLOURS



PILLOW JEANS  
LIGHT BLUE  
**900.2417**



PILLOW YELLOW  
OCHRE  
**900.2415**



PILLOW PURPLE  
**900.2416**



PILLOW BLACK  
**900.2400**



PILLOW RED  
**900.2401**



PILLOW WHITE  
**900.2405**



PILLOW LIGHT  
GREY  
**900.2410**



PILLOW TAUPE  
**900.2407**



PILLOW LIME  
GREEN  
**900.2403**



PILLOW  
ORANGE  
**900.2402**



PILLOW PINK  
**900.2412**



PILLOW  
TURQUOISE  
**900.2406**



PILLOW SAND  
**900.2414**



PILLOW PETROL  
**900.2413**



PILLOW DARK  
BLUE  
**900.2411**



PILLOW BROWN  
**900.2408**

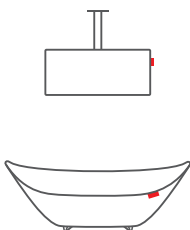


COVER  
**900.1027**

## HEADDEMCK FACTS

### PILLOW & COVER

52 x 41,5 x 22 CM & 30 x 25 x 23 CM



#### Material

Pillow: **METAL AND  
POLYESTER**

Cover: **NYLON RIPSTOP**

#### Stuffing

Pillow: **100% POLYESTER FIBERFILL**

#### Weight product

Pillow: **0.85 KG**

Cover: **1.05 KG**

#### Dimensions product (LxWxH)

Pillow: **52 x 41,5 x 22 CM**

Cover: **30 x 25 x 23 CM**

#### Dimensions packaging (LxWxH)

Pillow: **70 x 30 x 13 CM**

Cover: **45 x 25 x 7 CM**

#### Weight product+packaging

Pillow: **1.65 KG**

Cover: **1.35 KG**

#### User recommendations

**Treat your pillow like a  
regular garden cushion and  
store it indoors when it rains**

#### Washing Instructions

**Lukewarm water & neutral soap**

#### Batchnumber

Cover:

**In the cover bag on a white label**

#### Features

Pillow:

• **Keeps you relaxed**

Cover:

• **Keeps your Headdemock dry**



OUTDOOR

XXXXXXXXXXXXXXXXXXXXXXXXXXXX

# EDISON THE PETIT

XXXXXXXXXXXXXXXXXXXXXXXXXXXX



## AVAILABLE COLOURS



WHITE  
900.4012

## EDISON THE PETIT FACTS

H= 25 CM  
W= 16 CM



Material outer  
**PP**

Material inner  
**ABS BASEPLATE WITH LED HOUSING**

LED Kelvin  
**2700**

Weight product  
**1 KG**

Dimensions product  
**H= 25 CM  
W= 16 CM**

Dimensions packaging (LxWxH)  
**30.5 x 19 x 19 CM**

Weight product+packaging  
**1.5 KG**

### User recommendations

For technical details and advice  
check the manual (included in box)  
Use only with the electric charger  
supplied

Watt  
**1 WATT**

Lumen  
**43**

Lux  
**4.1**

Battery type  
**LI-POLYMER**

Voltage  
**5V**

**IP 21 (LAMP)**  
**MICRO USB (PLUG)**  
**SPLASH RESISTANT**

Duration  
**1: 24 hours  
2: 15 hours  
3: 6 hours**

Cleaning Instructions  
Wipe clean with a moist cloth or  
water and soap

Batchnumber  
Bottom sticker serial number

Features  
• 3 different light settings  
• Wireless  
• Chargeable  
• For in- and outdoor use



INDOOR



OUTDOOR

XXXXXXXXXXXXXXXXXXXXXXXXXXXX

# EDISON THE MEDIUM

XXXXXXXXXXXXXXXXXXXXXXXXXXXX



## AVAILABLE COLOURS

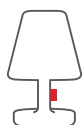


WHITE  
900.4020

## EDISON THE MEDIUM

### FACTS

H= 51 CM  
W= 32 CM



Material outer  
**PE**

Material inner  
**ALUMINUM BASEPLATE  
WITH LED HOUSING**

LED Kelvin  
**2700**

Weight product  
**3 KG**

Dimensions product  
**H= 51 CM  
W= 32 CM**

Dimensions packaging (LxWxH)  
**34 x 34 x 52 CM**

Weight product+packaging  
**4 KG**

Watt  
**5 WATT**

Lumen  
**211**

Lux  
**15.3**

**IP 55 (LAMP)  
IP 44 (PLUG)  
SPLASH RESISTANT**

User recommendations  
*For technical details and advice  
check the manual (included in box)*

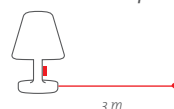
### Cleaning Instructions

*Clean carefully with soft cloth and lukewarm water (if necessary with neutral soap) Do not use any cleaning materials that contain chemicals*

Batchnumber  
*Bottom of the lamp*

### Features

- Medium size, maximum style
- Splash resistant, suitable for in- and outdoor use
- Controllable with remote control, continuously dimmable
- Remote reaches up to 10 meters



INDOOR



OUTDOOR

XXXXXXXXXXXXXXXXXXXXXXXXXXXX

# EDISON THE GRAND

XXXXXXXXXXXXXXXXXXXXXXXXXXXX



## AVAILABLE COLOURS

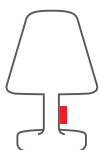


WHITE  
900.4003

## EDISON THE GRAND

### FACTS

H= 90 CM  
W= 60 CM



Material outer  
**PE**

Material inner  
**ALUMINUM BASEPLATE  
WITH LED HOUSING**

LED Kelvin  
**2700**

Weight product  
**13 KG**

Dimensions product  
**H= 90 CM  
W= 60 CM**

Dimensions packaging (LxWxH)  
**60 x 60 x 95 CM**

Weight product+packaging  
**17 KG**

Watt  
**14**  
Lumen  
**686**

Lux  
**39.2**

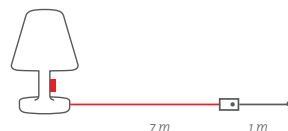
**IP 55 (LAMP)  
IP 44 (PLUG)  
SPLASH RESISTANT**

User recommendations  
**For technical details and advice  
check the manual (included in box)**

Cleaning Instructions  
**Dirt- and moisture repellent, easy  
cleaning with lukewarm water and  
neutral soap**

Batchnumber  
**Bottom transformer serial number**

Features  
• Controllable with remote control,  
continuously dimmable  
• Innovative LED technology  
• For in- and outdoor use



Transformer and control button with  
3 dimmer settings LED-lighting



INDOOR



OUTDOOR



# ROCKCOCO



COMES WITH HANDY CEILING KIT



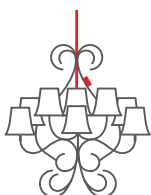
## AVAILABLE COLOURS



TRANSPARENT  
900.4201

## ROCKCOCO FACTS

H= 62 CM  
W= 68 CM



Material  
**POLYCARBONATE**

LED Kelvin  
**2200**

Weight product  
**6 KG**

Dimensions product  
**H= 62 CM  
W= 68 CM**

Dimensions packaging (LxWxH)  
**28 x 27 x 73 CM**

Weight product+packaging  
**8 KG**

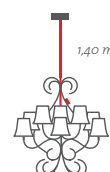
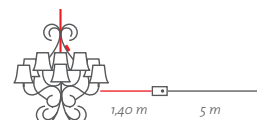
Watt  
**10 x 1 WATT**

Lumen  
**168**

**IP 55 (LAMP)  
IP 44 (PLUG)**

### Features

- The first outdoor LED chandelier in the world
- Warm LED light, suitable for in- and outdoor use
- Controllable with remote control, continuously dimmable
- Remote reaches up to 10 meters
- UV resistant
- Splash-resistant
- Ceiling kit included



Transformer and control button  
Continuously dimmable



INDOOR



OUTDOOR

# SNACKLIGHT



## AVAILABLE COLOURS



RED  
900.4030



ORANGE  
900.4031



GREEN  
900.4032



YELLOW  
900.4033



WHITE  
900.4034



BLUE  
900.4035

## SNACKLIGHT FACTS

**LAMP**  
18.5 CM X 13.5 CM  
**TRAY**  
3 CM X 55 CM



Material  
Lamp: **PP**  
Tray: **METAL**  
Bowls: **PP**

Weight product  
Lamp: **0.33 KG**  
Tray: **1.8 KG**  
Bowls: **PP**

Dimensions product  
Lamp: **18.5 CM X 13.5 CM**  
Tray: **3 CM X 55 CM**  
Bowls: **3.5 CM X 15 CM**

Dimensions packaging (LxWxH)  
**60 x 60 x 17 CM**

Weight product+packaging  
**4 KG**

Watt  
**1 WATT**

Battery type  
**LI-POLYMER**

Voltage  
**5 V**

Duration  
**6.5 HOURS (100%)**

**IP 21 (LAMP)**  
**MICRO USB PLUG**  
**SPLASH RESISTANT**

Washing instructions  
Wipe clean with a moist cloth or a dust rag. Bowls are not microwave and dishwasher proof

Batchnumber  
Sticker on the bottom

Features  
• Beautiful tray and lamp all-in-one  
• Perfect combination of sturdy metal with strong synthetics  
• Rechargeable  
• For in- and outdoor use  
• Lamp and tray connect with magnets  
• Includes 3 bowls with anti slip bottom  
• 3 different light settings  
• Combines perfectly with snackrack to create a stylish table



INDOOR



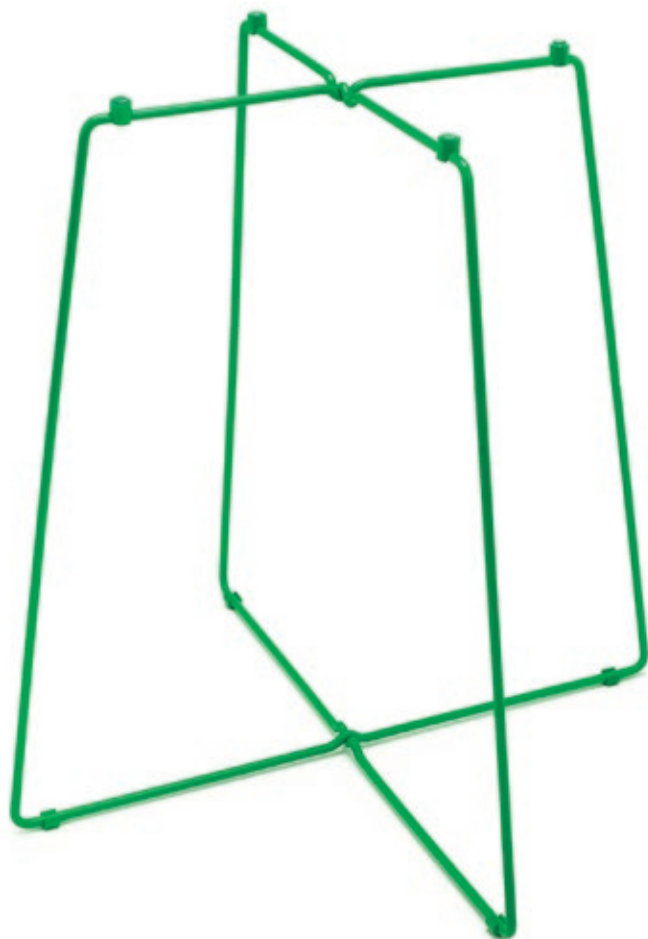
OUTDOOR

XXXXXXXXXXXXXXXXXXXXXXXXXXXX

# SNACKRACK

XXXXXXXXXXXXXXXXXXXXXXXXXXXX

fatboy®



## AVAILABLE COLOURS



RED  
900.6530



ORANGE  
900.6531



GREEN  
900.6532



YELLOW  
900.6533



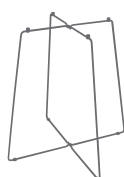
WHITE  
900.6534



BLUE  
900.6535

## SNACKRACK FACTS

45 x 45 CM



### Material

**POWDER COATED METAL  
WITH INTEGRATED  
MAGNETS TO STABILIZE  
YOUR SNACKLIGHT (6 MM  
WIRE METAL)**

### Weight product

**0.5 KG**

### Dimensions product

**45 CM X 45 CM**

### Dimensions packaging (LxWxH)

**46 x 46 x 2 CM**

### Weight product+packaging

**0.5 KG**

### Washing instructions

*Wipe clean with a moist cloth or a  
dust rag*

### Features

- Magnetic click system to stabilize your Snacklight
- Reversible (use both ways – up and down!)
- Easy to assemble
- Suitable for in- and outdoor use



INDOOR



OUTDOOR

XXXXXXXXXXXXXXXXXXXXXXXXXXXX

# SNACKLIGHT + SNACKRACK

XXXXXXXXXXXXXXXXXXXXXXXXXXXX



## AVAILABLE COLOURS



RED  
900.6530.1



ORANGE  
900.6531.1



GREEN  
900.6532.1



YELLOW  
900.6533.1



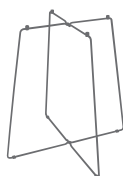
WHITE  
900.6534.1



BLUE  
900.6535.1

## SNACKRACK FACTS

45 x 45 CM



Material

Lamp: **PP**

Tray: **METAL**

Bowls: **PP**

Snackrack: **POWDER COATED METAL WITH INTEGRATED MAGNETS TO STABILIZE YOUR SNACKLIGHT (6 MM WIRE METAL)**

Weight product

Lamp: **0.33 KG**

Tray: **1.8 KG**

Bowls: **PP**

Snackrack: **0.5 KG**

Dimensions product

Lamp: **18.5 CM X 13.5 CM**

Tray: **3 CM X 55 CM**

Bowls: **3.5 CM X 15 CM**

Snackrack: **45 CM X 45 CM**

Dimensions packaging (LxWxH)

**59 x 59 x 18 CM**

Weight product+packaging

**4 KG**

Snacklight Watt

**1 WATT**

Snacklight Battery type

**LI-POLYMER**

Snacklight Voltage

**5 V**

Snacklight Duration

**6.5 HOURS (100%)**

**IP 21 (LAMP)**

**MICRO USB PLUG  
SPLASH RESISTANT**

Washing instructions

Wipe clean with a moist cloth or a dust rag. Bowls are not microwave and dishwasher proof

Features

- Beautiful tray and lamp all-in-one
- Perfect combination of sturdy metal with strong synthetics
- Rechargeable lamp
- Lamp and tray connect with magnets
- Includes 3 bowls with anti slip bottom
- 3 different light settings
- Magnetic click system to stabilize your Snacklight on the Snackrack
- Reversible (use both ways - up and down!)
- Easy to assemble
- Suitable for in- and outdoor use



INDOOR



OUTDOOR

XXXXXXXXXXXXXXXXXXXXXXXXXXXX

# SUPERCHARGER

XXXXXXXXXXXXXXXXXXXXXXXXXXXX

fatboy®



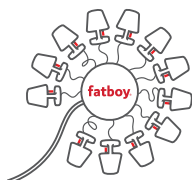
## AVAILABLE COLOURS



BLACK  
900.4021

## SUPERCHARGER FACTS

145 x 38 CM



Material  
**POLYCARBONATE**

Weight product  
**1 KG**

Dimensions product  
**H= 38 CM**  
**W= 145 CM**

Dimensions packaging (LxWxH)  
**33 x 24 x 5.2 CM**

Weight product+packaging  
**1.1 KG**

### User recommendations

Check the sticker at the cable to connect the USB plug in the correct way (right side up)

Batchnumber  
Sticker on the bottom

### Features

- Charge up to 12 ETP's or Snacklight in one go!





XXXXXXXXXXXXXXXXXXXXXXXXXXXX

# COOPER CAPPIE

XXXXXXXXXXXXXXXXXXXXXXXXXXXX

**fatboy®**



## AVAILABLE PRINTS

									
HORSE RACE 900.4310	CAR RACE 900.4311	DOGGIE RACE 900.4309	PLAID RED 900.4313	PLAID BLUE 900.4312	BRUSSELS 900.4306	GHEENT 900.4305	ANTWERP 900.4304	PORTO BLUE 900.4308	PORTO PINK 900.4307
									
PIGGY 900.4315	GRANNY 900.4314	MR BLUE 900.4301	MR PINK 900.4302	MR ORANGE 900.4303	FATIMA 900.4321	MOUNIR 900.4320	ALI 900.4319	AISCHA 900.4318	WHITELIGHT 900.4316
									
BLACKLIGHT 900.4317	BABY BOY 900.4322	BABY GIRL 900.4323	CANDLELIGHT 900.4324	GLOBETROTTER 900.4325	SKULL BLACK 900.4326	PARTY TIME 900.4327	FIREPLACE 900.4328	WILLEM GOLD 900.4329	BABY MICE 900.4330
									
JUDY GARLAND 900.4331	ESPADA PLUM PURPLE 900.4333	ESPADA GREEN 900.4334	ESPADA BLUE 900.4335	ESPADA GREY 900.4336	ESPADA PINK 900.4337	ESPADA KIWI GREEN 900.4338	ESPADA PEACH PINK 900.4339	ESPADA BLUEBERRY BLUE 900.4340	CAMOUFLAGE GREEN 900.4341
									
CAMOUFLAGE ORANGE 900.4341	MRS KIWI GREEN 900.4343	MRS PEACH PINK 900.4344	MRS BLUEBERRY BLUE 900.4345	MRS PLUM PURPLE 900.4346	MRS GREEN 900.4347	MRS BLUE 900.4348	MRS GREY 900.4349	MRS PINK 900.4350	MR GREEN 900.4351
									
MR GREY 900.4352	MR AQUA 900.4353	VENZ BLUE 900.4354	VENZ BLACK 900.4355	VENZ RED 900.4356					

## COOPER CAPPIE FACTS

49 x 14 CM



Material  
**POLYPROPYLENE**

Dimensions product (LxW)  
**49 x 14 CM**

Weight product  
**0.026 KG**

Dimensions packaging (LxWxH)  
**20 x 50 CM**

Weight product+packaging  
**0.09 KG**

### Features

- Customize your Edison The Petit
- 55 designs to suit any interior, mood or party theme
- Packed in an envelope



INDOOR



OUTDOOR

XXXXXXXXXXXXXXXXXXXXXXXXXXXX

# DO-IT-YOURSELF COOPER CAPPIES

XXXXXXXXXXXXXXXXXXXXXXXXXXXX



## AVAILABLE COLOURS



TRANSPARENT  
900.4332

## DO-IT-YOURSELF COOPER CAPPIE FACTS

49 x 14 CM



Material  
**CARDBOARD,  
POLYPROPYLENE  
AND SYNTHETICS**

Dimensions product (LxW)  
**49 x 14 CM**

Weight product  
**0.25 KG**

Dimensions packaging (LxWxH)  
**20 x 50 CM**

Weight product+packaging  
**0.5 KG**

### Features

- Design and create your own Cooper Capps!
- Use over and over again, as many times as you like
- Including examples and multi-colored markers
- Packed in an envelope
- Comes with three Capps



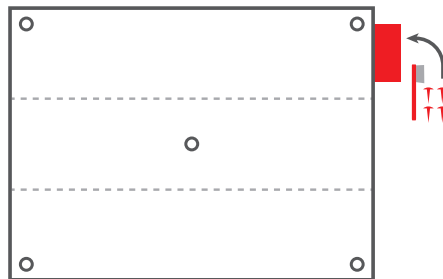
INDOOR



OUTDOOR



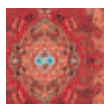
# PICNIC LOUNGE



*Rolls up like a bag*



## AVAILABLE COLOURS



PICNIC LOUNGE  
900.6120

## PICNIC LOUNGE FACTS



Material  
**TOP: POLYESTER  
BOTTOM: POLYESTER WITH  
PVC COATING**

Stuffing  
**FOAM**

Coating  
**WATER- AND DIRT  
REPELLENT**

Weight product  
**5.3 KG**

Dimensions product (LxW)  
**210 x 280 CM**

Dimensions packaging (LxWxH)  
**25 x 25 x 69 CM**

Weight product+packaging  
**7.3 KG**

Batchnumber  
*Inside Fatboy label*

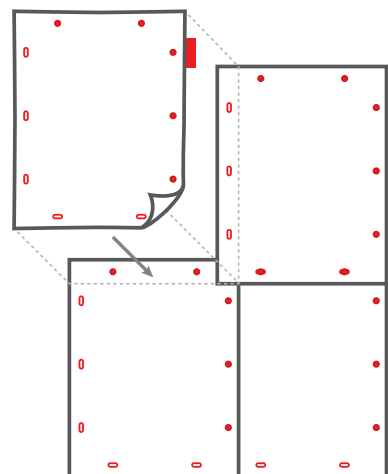
Washing Instructions  
*Clean by wiping it with a moist cloth  
or water and neutral soap.  
Exposure to direct sunlight can  
cause colour fading*

- Features
- Supersized picnic blanket for your whole family and all of your friends
  - Rolls up like a handy carrier bag, with pins as well as brush included
  - Specially designed pattern
  - Water repellent top and bottom

XXXXXXXXXXXXXXXXXXXXXXXXXXXX

# NON-FLYING CARPET

XXXXXXXXXXXXXXXXXXXXXXXXXXXX



Match and connect



CONNECT WITH THESE  
RED RUBBER FATBOY  
BUTTONS

## AVAILABLE COLOURS



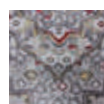
SMALL PERSIAN  
LIME  
900.6401



SMALL PERSIAN  
ORANGE  
900.6402



BIG PERSIAN  
LIME  
900.6403



BIG PERSIAN  
YELLOW  
900.6404



CASABLANCA  
PURPLE  
900.6434



CASABLANCA  
TURQUOISE  
900.6435



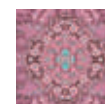
CASABLANCA  
GREEN  
900.6436



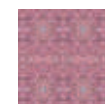
CORIANDER  
900.6413



THYME  
900.6414



SAFFRON  
900.6415



SUMAC  
900.6416



CINNAMON  
900.6417



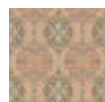
ALLSPICE  
900.6418



ANICE  
900.6419



FENNEL  
900.6420



CARAWAY  
900.6421



GINGER  
900.6422



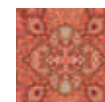
CARDAMOM  
900.6423



JUNIPER  
900.6424



CAYENNE  
900.6425



CHILI  
900.6426



PAPRIKA  
900.6427

## FLYING CARPET FACTS

180 x 140 CM



Material  
**POLYESTER  
& PVC BOTTOM**

Stuffing  
**5 MM FOAM**

Coating  
**WATER- AND DIRT  
REPELLENT**

Weight product  
**4 KG**

Dimensions product (LxW)  
**180 x 140 CM**

Dimensions packaging (LxWxH)  
**22 x 22 x 140 CM**

Weight product+packaging  
**6 KG**

User recommendations  
• Exposure to UV light can cause colour fading  
• When not in use, store inside

Washing Instructions  
Wipe clean with a moist cloth or water and soap

Batchnumber  
On the label at the bottom

Features  
• Comfortable top and anti-slip bottom  
• Make it as big or small as you want with the rubber Fatboy buttons  
• Specially designed patterns and fabrics  
• Water-repellent fabric and bottom



INDOOR



OUTDOOR

XXXXXXXXXXXXXXXXXXXXXXXXXXXX

# STRIPESOL

XXXXXXXXXXXXXXXXXXXXXXXXXXXX

fatboy®



BASE PLATE (SOLD SEPARATELY)



## AVAILABLE COLOURS



ANTHRACITE  
900.5005



INDUSTRIAL  
GREEN  
900.5006



TAUPE  
900.5007



ORANGE  
900.5008



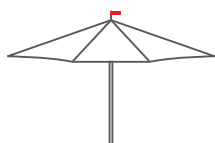
LIGHT GREY  
900.5009



RED  
900.5010

## STRIPESOL FACTS

**CLOTH**  
350 CM Ø  
**POLE**  
38 MM Ø



Material  
**METAL FRAME WITH  
POLYESTER PARASOL  
CLOTH (PRINTED)**

Weight product  
**13 KG**

Dimensions product  
Cloth: **350 CM Ø**  
Pole: **38 MM Ø**

Dimensions packaging (LxWxH)  
**187 x 21 x 21 CM**

Weight product+packaging  
**15 KG**

Batchnumber  
Cloth: *On the inside of the cloth*  
Pole: *On the inside of the white cover*

Features  
• **Automatic mechanism**  
(just pull the cord)  
• **Comes with handy cover**  
• **Matches Formitable XL**  
• **With unique flag**  
• **Suitable for outdoor use**

**BASE 900.5100**  
70 CM



Material  
**STEEL**

Coating  
**BLACK POWDER COAT**

Weight product  
**25 KG**

Dimensions product (Ø)  
**70 CM Ø**  
**44 MM Ø**

Dimensions packaging (LxWxH)  
**72 x 72 x 6 CM**

Weight product+packaging  
**27.5 KG**



OUTDOOR



XXXXXXXXXXXXXXXXXXXXXXXXXXXX

# FORMITABLE XS

XXXXXXXXXXXXXXXXXXXXXXXXXXXX



## AVAILABLE COLOURS



ANTHRACITE  
910.0010



INDUSTRIAL  
GREEN  
910.0011



TAUPE  
910.0012



ORANGE  
910.0013



LIGHT GREY  
910.0014



RED  
910.0015

## FORMITABLE XS FACTS

76 CM X 80 CM Ø  
FLOOR PLATE  
55 CM Ø



### Material

**GALVANISED METAL  
POWDER COATED IN  
FINE TEXTURE**

Weight product  
**22 KG**

Dimensions product  
**76 CM X 80 CM Ø**  
Floor plate: **55 CM Ø**

Dimensions packaging (LxWxH)  
**82 x 82 x 12 CM**

Weight product+packaging  
**22.5 KG**

### Washing instructions

*Easy cleaning with lukewarm water  
and neutral soap*

### Features

- Easy to assemble (flat pack)
- Perfect size to fit anywhere
- Suitable for in- and outdoor use



INDOOR



OUTDOOR

XXXXXXXXXXXXXXXXXXXXXXXXXXXX

# FORMITABLE XL

XXXXXXXXXXXXXXXXXXXXXXXXXXXX



**MAGNETIC CAP FOR  
EASY PUT AWAY**

## AVAILABLE COLOURS



**ANTHRACITE**  
**910.0030**



**INDUSTRIAL  
GREEN**  
**910.0031**



**TAUPE**  
**910.0032**



**ORANGE**  
**910.0033**



**LIGHT GREY**  
**910.0034**



**RED**  
**910.0035**

## FORMITABLE XL FACTS

**76 CM X 120 CM Ø**  
**FLOOR PLATE**  
**74 CM Ø**



### Material

**GALVANISED METAL**  
**POWDER COATED IN**  
**FINE TEXTURE**

### Weight product

**48 KG**

### Dimensions product

**76 CM X 120 CM Ø**  
Floor plate: **74 CM Ø**

### Dimensions packaging (LxWxH)

Top plate: **121 x 121 x 7 CM**  
Floor plate + pole:  
**82 x 82 x 12 CM**

### Weight product+packaging

Top plate: **23.5 KG**  
Floor plate + pole: **29 KG**

### Washing instructions

**Easy cleaning with lukewarm water**  
**and neutral soap**

### Features

- **Special plug to close hole for parasol (when not in use)**
- **Easy-to-store plug (with magnet)**
- **Suitable for in- and outdoor use**



INDOOR



OUTDOOR

XXXXXXXXXXXXXXXXXXXXXXXXXXXX

# TABLITSKI

XXXXXXXXXXXXXXXXXXXXXXXXXXXX

**fatboy®**



## AVAILABLE COLOURS



BLACK  
900.6500.0



LIGHT GREY  
900.6500.1



BLUE  
900.6500.2



ORANGE  
900.6500.3



LIME GREEN  
900.6500.4



PINK  
900.6500.5



RED  
900.6500.6

## TABLITSKI FACTS

40 x 40 x 30 CM



Material  
**STEEL / RUBBER**

Coating  
**POWDER COATING**

Weight product  
**5.5 KG**

Dimensions product (LxWxH)  
**40 x 40 x 30 CM**

Dimensions packaging (LxWxH)  
**41 x 41 x 7 CM**

Weight product+packaging  
**6 KG**

### Features

- Bold and sturdy look
- Suitable for in- and outdoor use
- Available in 7 colours
- Perfect fit with the Headdemock



INDOOR



OUTDOOR

XXXXXXXXXXXXXXXXXXXXXXXXXXXX

# MAGWEL

XXXXXXXXXXXXXXXXXXXXXXXXXXXX

fatboy®



## AVAILABLE COLOURS



RED  
910.0001

## MAGWEL FACTS

92 MM x 95 MM Ø



Material  
**ABS**

Coating  
**RUBBER**

Weight product  
**1 KG**

Dimensions product (LxW)  
**92 MM x 95 MM Ø**

Dimensions packaging (LxWxH)  
**10 x 10 x 11 CM**

Weight product+packaging  
**0.5 KG**

### Features

- Use anywhere and for anything you want
- Super strong magnet
- Beautiful rubber coating finish



INDOOR



OUTDOOR

XXXXXXXXXXXXXXXXXXXXXXXXXXXX

# DOLLY & HOT DOG

XXXXXXXXXXXXXXXXXXXXXXXXXXXX



## AVAILABLE COLOURS



DOLLY WHITE  
900.3000



DOLLY SILVER  
900.3001



DOLLY ANTHRACITE  
900.3002



HOT DOG WHITE  
900.3010



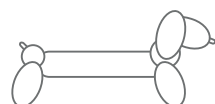
HOT DOG SILVER  
900.3011



HOT DOG ANTHRACITE  
900.3012

## DOLLY & HOT DOG FACTS

115 x 103 CM & 153 x 80 CM



Material  
**PVC**

Weight product  
Dolly: **2.8 KG**  
Hot Dog: **3.7 KG**

Dimensions product (WxH)  
Dolly: **115 x 103 CM**  
Hot Dog: **153 x 80 CM**

Dimensions packaging (LxWxH)  
Dolly: **35 x 32 x 14 CM**  
Hot Dog: **36 x 32 x 10 CM**

Weight product+packaging  
Dolly: **2.9 KG**  
Hot Dog: **3.8 KG**

### Washing Instructions

Clean carefully with soft cloth and lukewarm water (if necessary with neutral soap) Do not use any cleaning materials that contain chemicals

### Batchnumber

Around valve location

### Features

- Inspired by and shaped after the iconic shapes of balloon animals
- Inflatable and deflatable
- Use electric pump to inflate
- Available in 3 stylish colours
- Stunning pieces of affordable art that will brighten up your day!



INDOOR



OUTDOOR



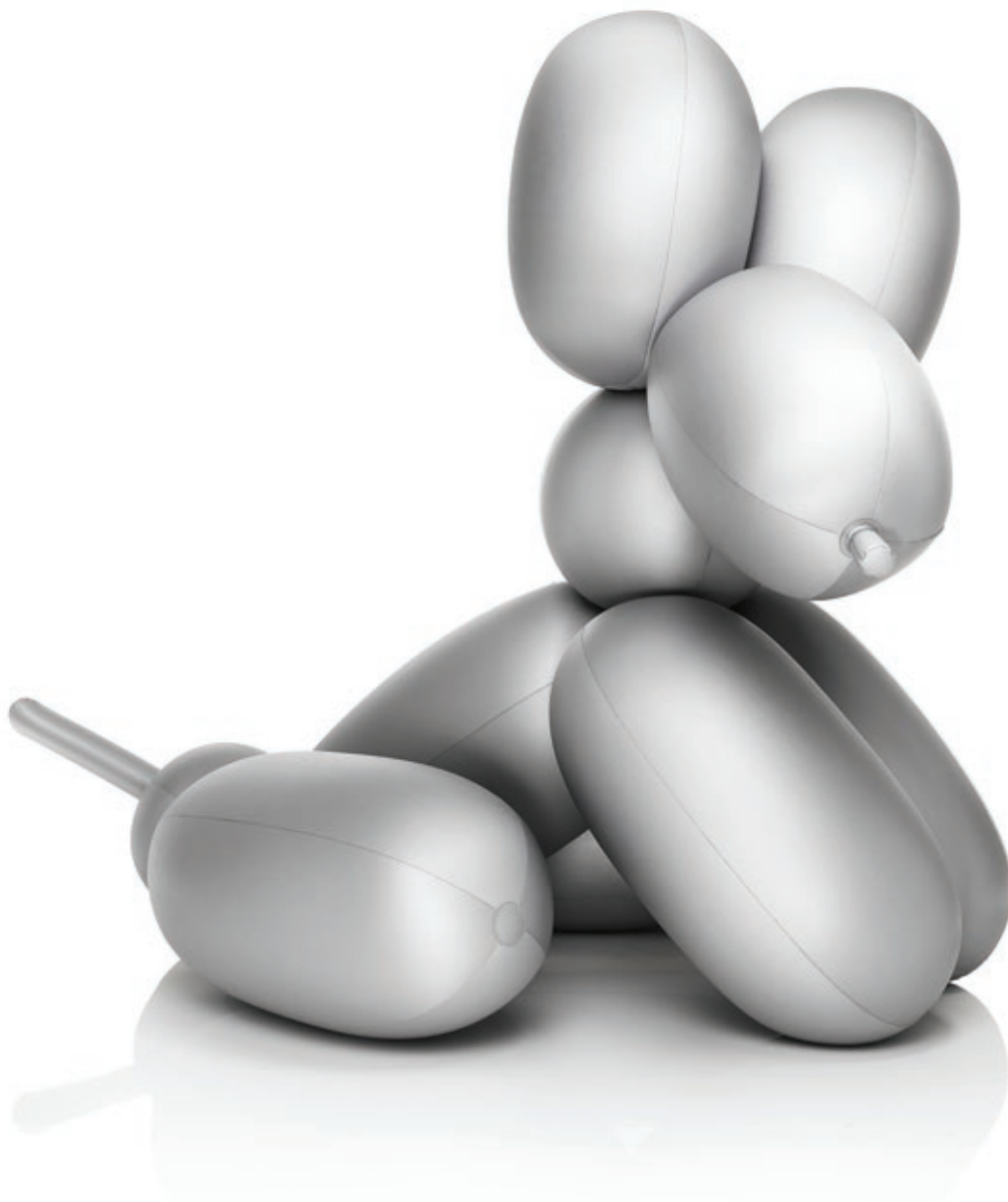
\*\*\*\*\*

**SJEF BALLOON COLLECTION**

# **BIG DOG**

\*\*\*\*\*

**fatboy®**



## **AVAILABLE COLOURS**



WHITE  
900.3020



SILVER  
900.3021



ANTHRACITE  
900.3022

## **BIG DOG FACTS**

**250 x 165 x 200 CM**



Material  
**PVC**

Weight product  
**9.7 KG**

Dimensions product (LxWxH)  
**250 x 165 x 200 CM**

Dimensions packaging (LxWxH)  
**60 x 46 x 19 CM**

Weight product+packaging  
**9.9 KG**

Washing Instructions  
**Clean carefully with soft cloth and lukewarm water (if necessary with neutral soap) Do not use any cleaning materials that contain chemicals**

Batch number  
**Around valve location**

Features  
• **The ultimate tongue in cheek statement piece!**  
• **Inflatable and deflatable**  
• **Use electric pump to inflate**



INDOOR



OUTDOOR

XXXXXXXXXXXXXXXXXXXXXXXXXXXX

# DESSWERRUM

XXXXXXXXXXXXXXXXXXXXXXXXXXXX

**fatboy®**



## AVAILABLE COLOURS



SAND, PINK  
900.6000.1



SAND, GREEN  
900.6000.2



SILVER, PINK  
900.6000.3



LIGHT GREY, GREEN  
900.6000.4



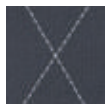
LIGHT SAND, ORANGE  
900.6000.5



OLIVE, GREEN  
900.6000.6



BROWN, PINK  
900.6000.7



ANTHRACITE, GREY  
900.6000.8



BRABANTSBONT, RED  
900.6000

## DESSWERRUM FACTS

45 x 45 CM



Material  
**SUNBRELLA FABRIC**  
**NATURAL RUBBER**

Material Brabantsbont  
**COTTON**  
**NATURAL RUBBER**

Weight product  
**0.8 KG**

Dimensions product (LxW)  
**40 x 40 CM**

Dimensions packaging (LxWxH)  
**40 x 10 x 10 CM**

Weight product+packaging  
**1 KG**

User recommendations

- Water temperature: max. 70°C
- Fill to maximum 1.7 litres
- Tip: once cooled off, give the water to your plants after use
- Iron your Desswerrum on a regular basis to maintain its water-repellence.

Washing Instructions Brabantsbont  
Wash cover at max. 40°C  
(remove water bottle)



Washing Instructions Sunbrella

- Wipe clean with a moist cloth or water and soap
- Wash cover at 40°C
- Wash inside out (remove water bottle)



Batchnumber

In the cover on a white label

Features

- Stays hot for hours
- Cushion and hot-water bottle all in one
- Suitable for in- and outdoor use



INDOOR



OUTDOOR

XXXXXXXXXXXXXXXXXXXXXXXXXXXX

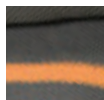
# KLAID

XXXXXXXXXXXXXXXXXXXXXXXXXXXX

fatboy®



## AVAILABLE COLOURS



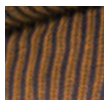
TAUPE / NEON  
ORANGE STRIPE  
**911.0001**



LIGHT GREY /  
NEON YELLOW  
STRIPE  
**911.0002**



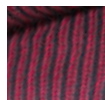
DARK GREY /  
NEON PINK  
STRIPE  
**911.0003**



TAUPE /  
NEON ORANGE  
**911.0004**



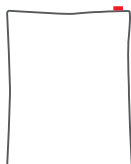
LIGHT GREY /  
NEON YELLOW  
**911.0005**



DARK GREY /  
NEON PINK  
**911.0006**

## KLAID FACTS

130 x 200 CM



### Material

**100% HIGH QUALITY  
COTTON (KNITTED)**

### Dimensions product (LxW)

**130 x 200 CM**

### Weight product

**1.5 - 1.8 KG**

### Dimensions packaging (LxWxH)

**45 x 43 x 8.5 CM**

### Weight product+packaging

**Stripe: 1.5 KG**

**Rib: 1.8 KG**

### Washing Instructions

- Put your Klad in a pillow cover (or anything else that will protect the knitting) and wash gently at max. 30° (non chlorine bleach)
- Dry flat



### Features

- The perfect accessory to have laying around the house: instant coziness!
- Beautiful basic color palette with neon detailing
- Supersized



INDOOR